

**Figure 14 - Histogram (frequency - concentration) plots for formaldehyde at Teddington (averaging periods of 5, 15, 30, and 60 minutes are given top - bottom).**

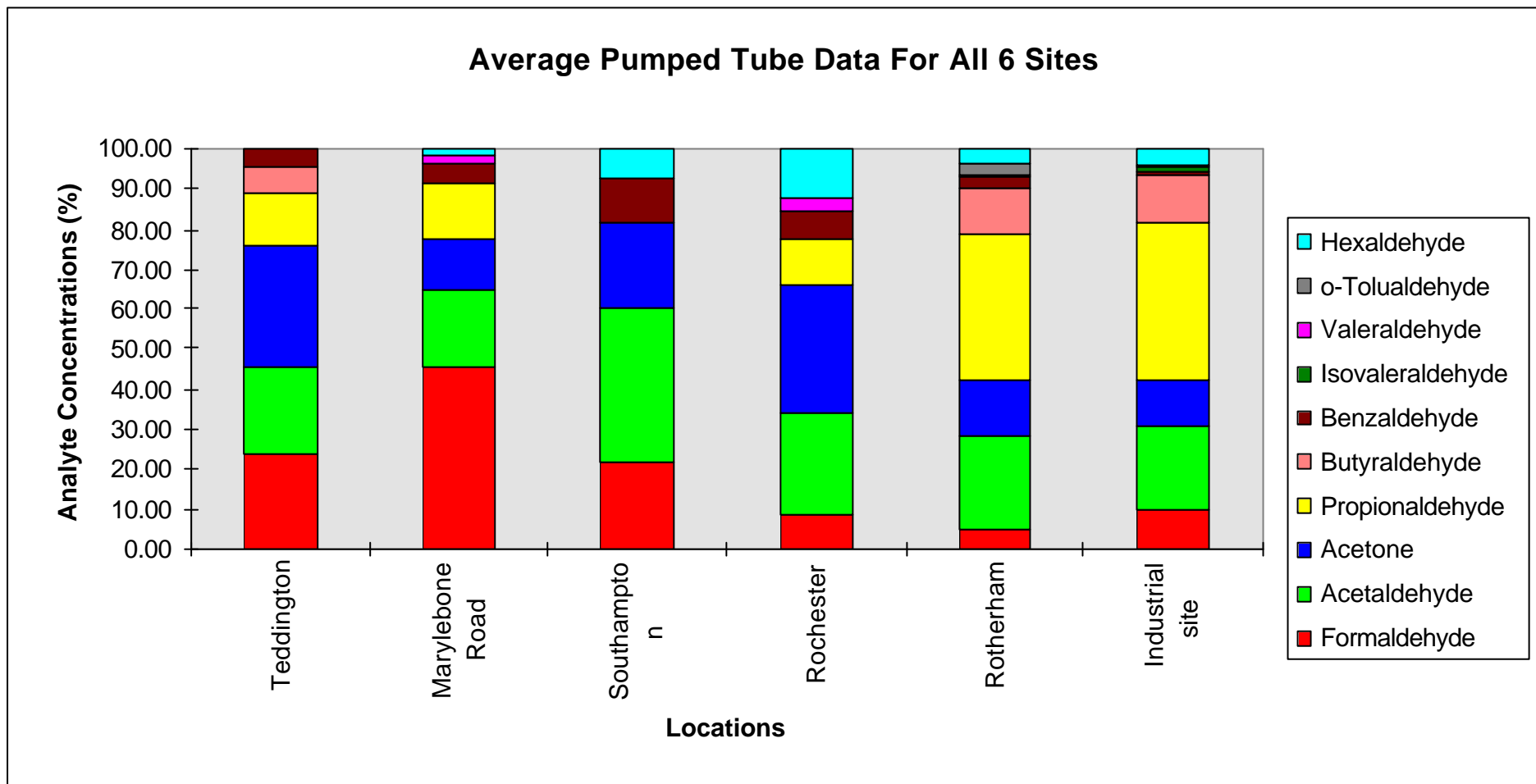


Figure 15 - Average breakdown of aldehydes measured at all sites by pumped DNPH cartridges.

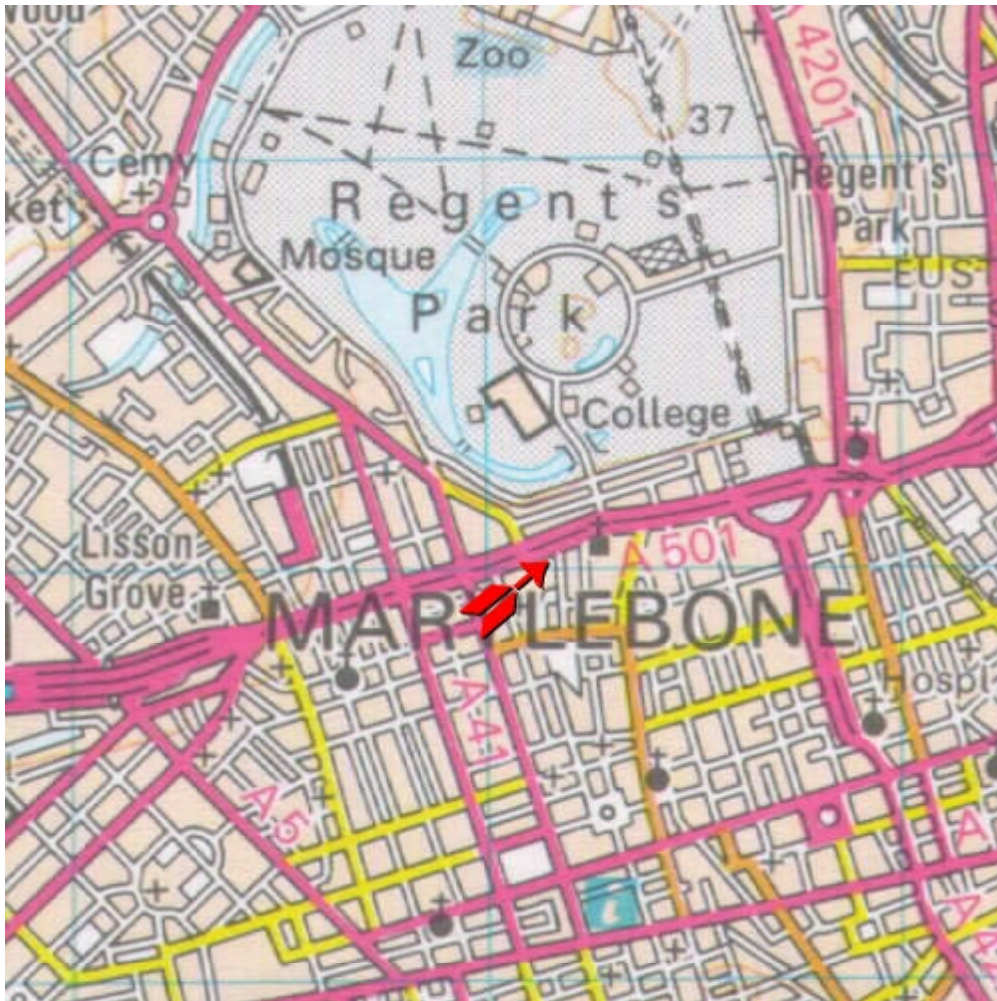


Figure 16 - Location of the roadside site measurements (Marylebone Road).

Formaldehyde and Nitric Oxide versus Time for Marylebone Road site

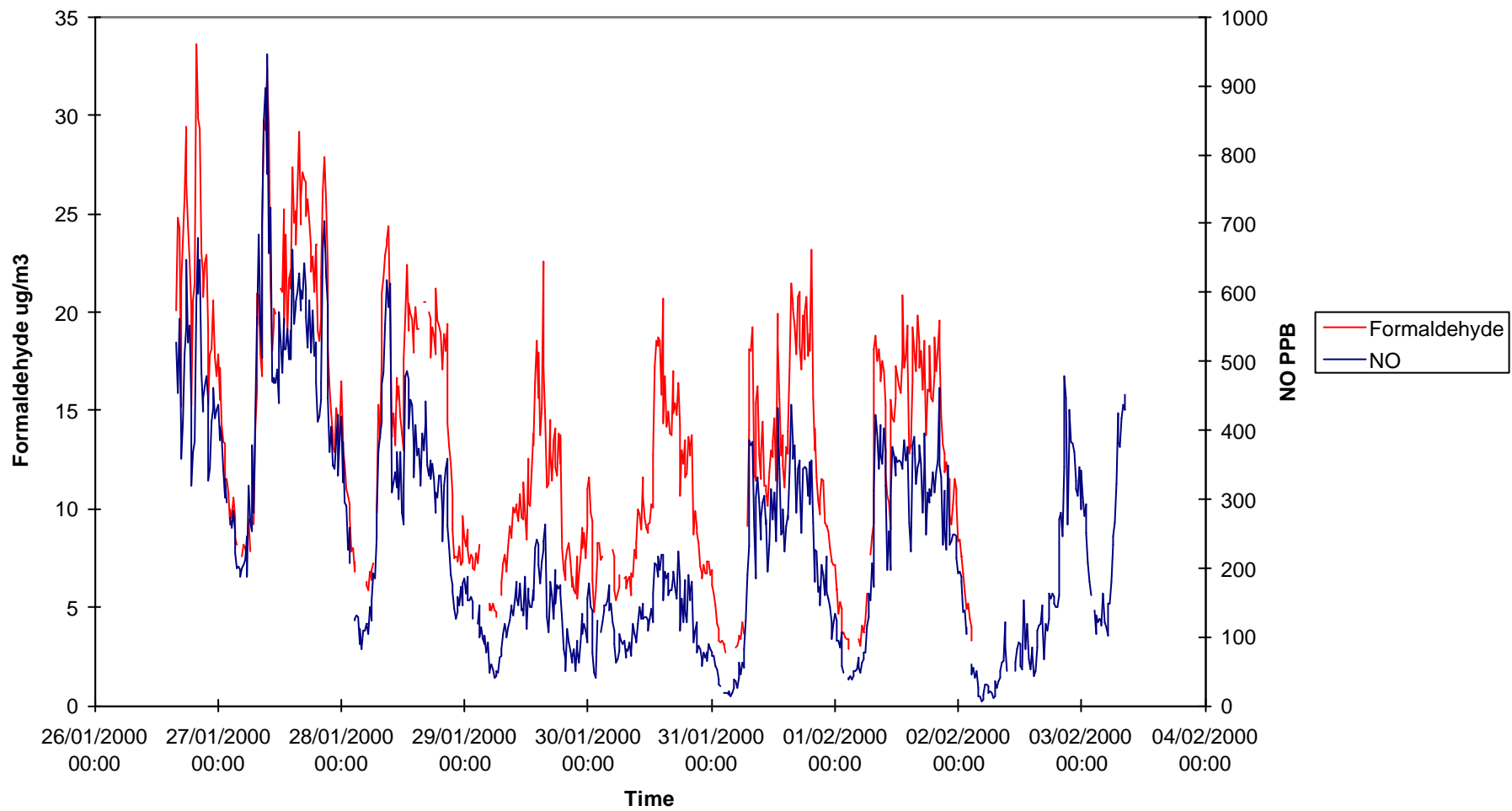


Figure 17 - Time series of formaldehyde and NO measurements at Marylebone Road.

## Formaldehyde and Nitrogen Dioxide versus Time at Marylebone

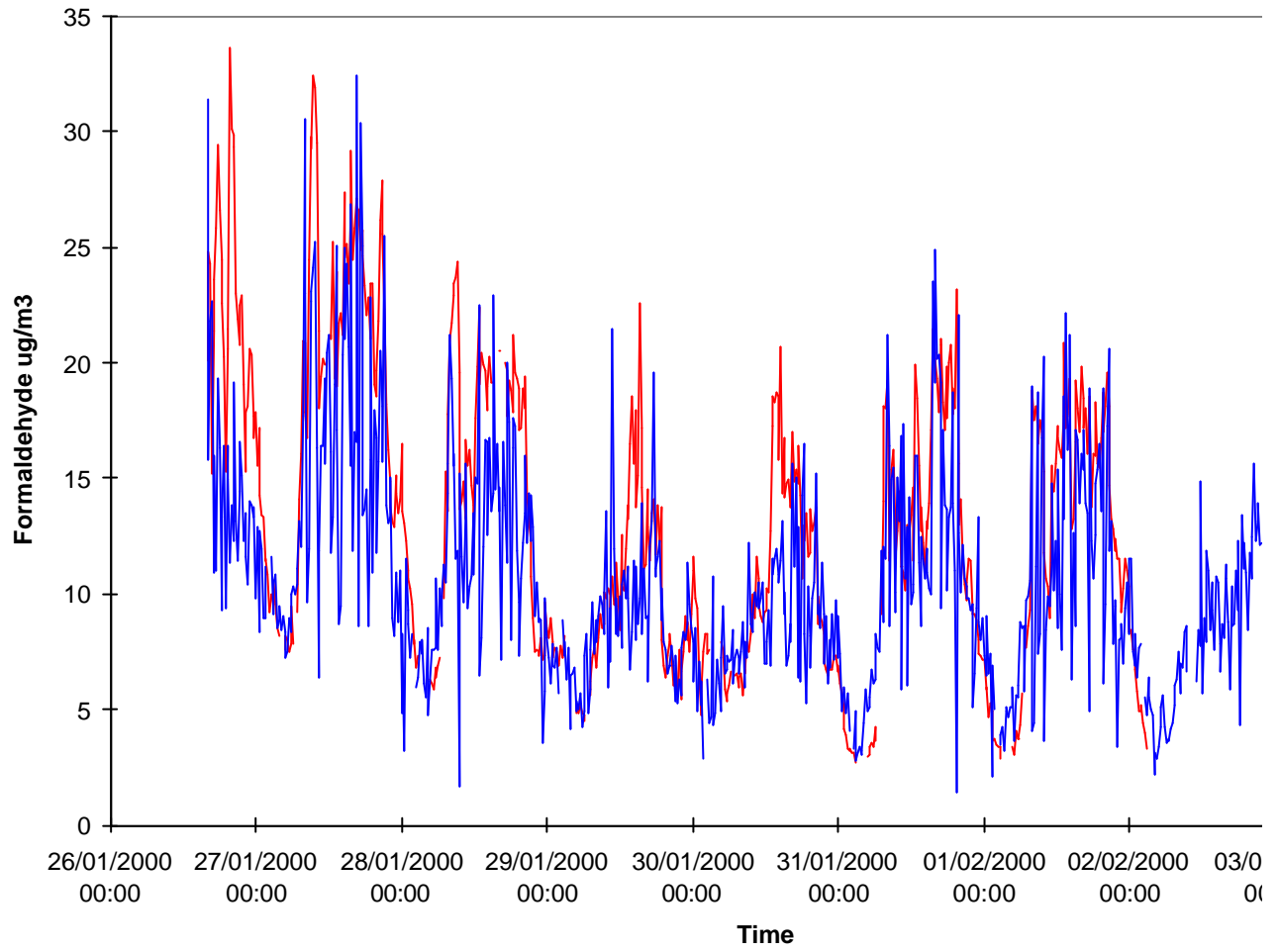


Figure 18 - Time series of formaldehyde and NO<sub>2</sub> measurements as Marylebone Road.

## Formaldehyde and Carbon Monoxide versus Time at Marylebon

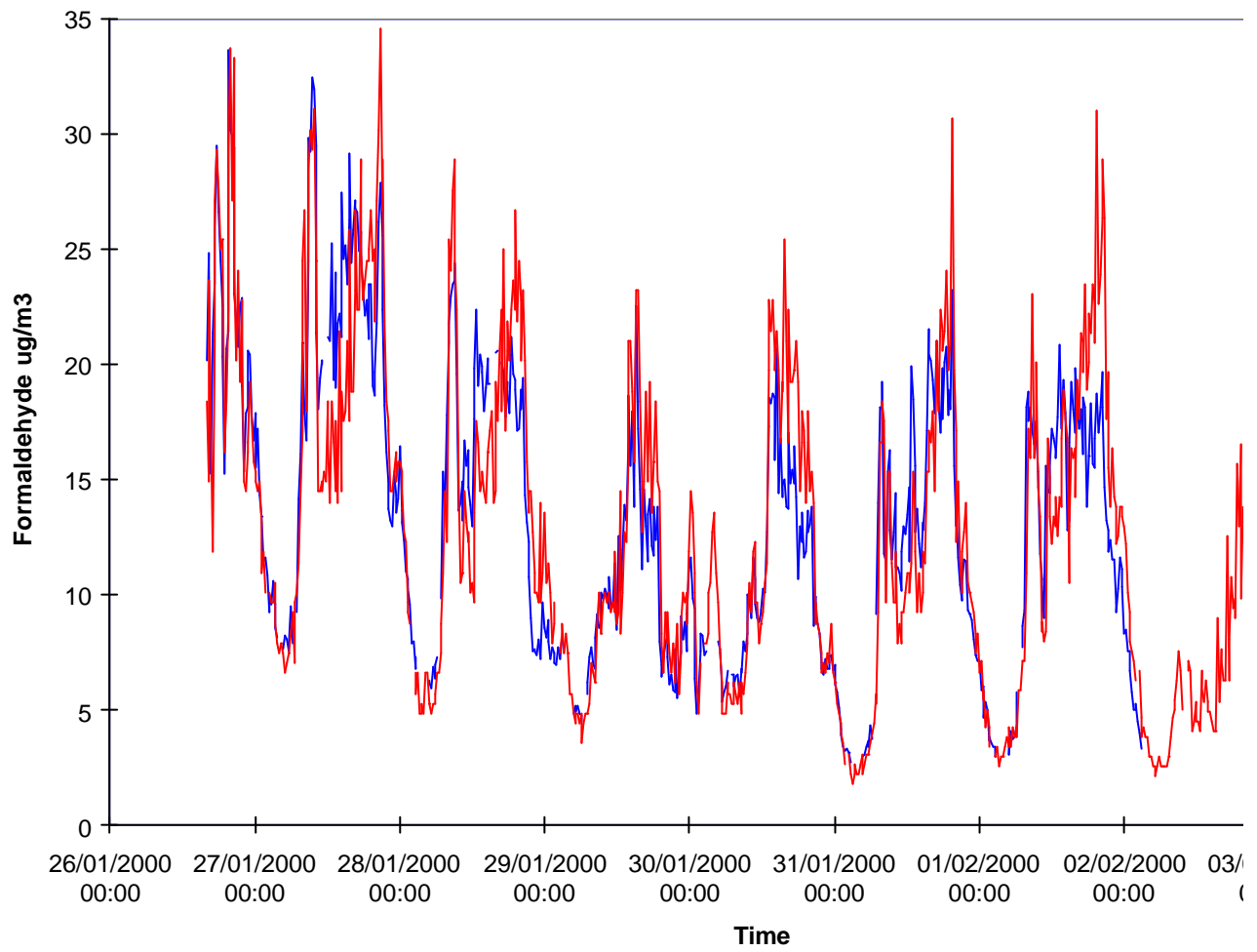


Figure 19 - Time series of formaldehyde and CO measurements at Marylebone Road.

## Diurnal Formaldehyde in ug/m3 (25C) at Marylebone

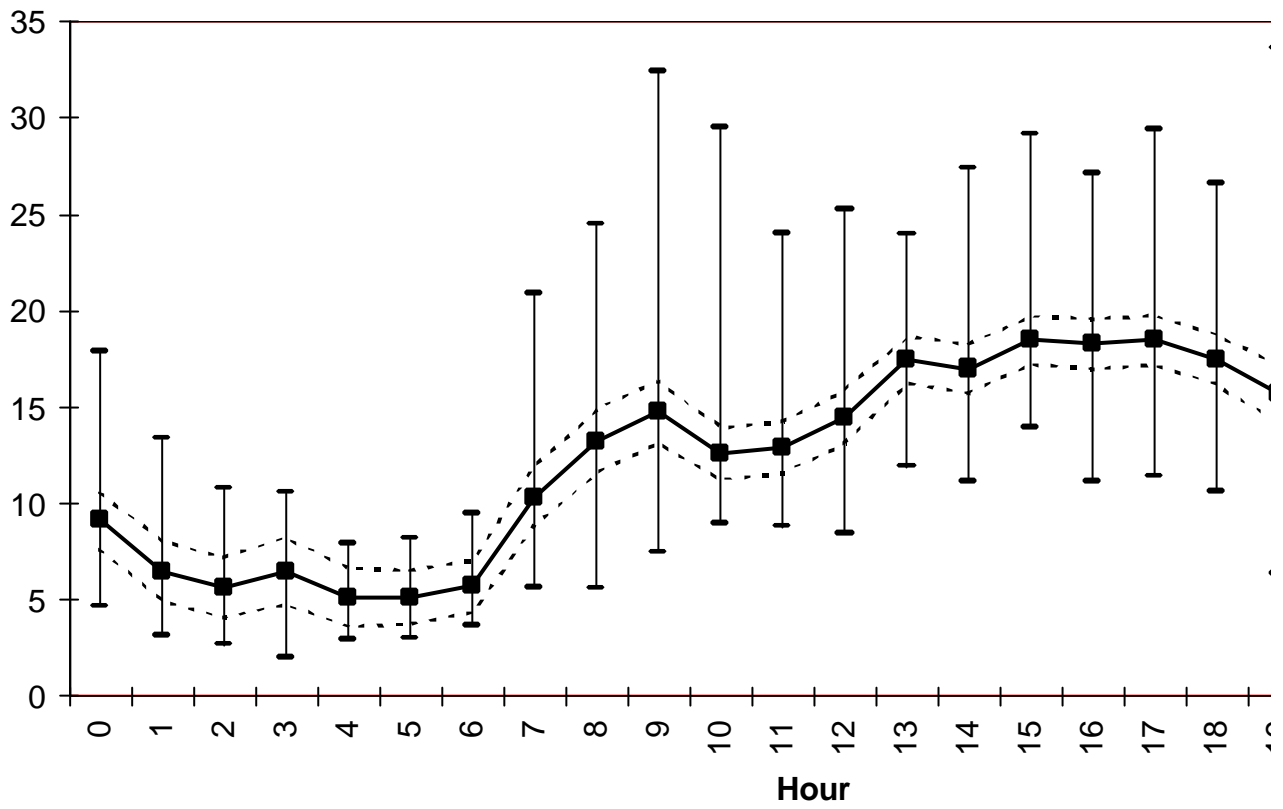


Figure 20 - Diurnal variation in formaldehyde measurements at Marylebone Road.