

Diurnal Formaldehyde in ug/m3 at Southampton site

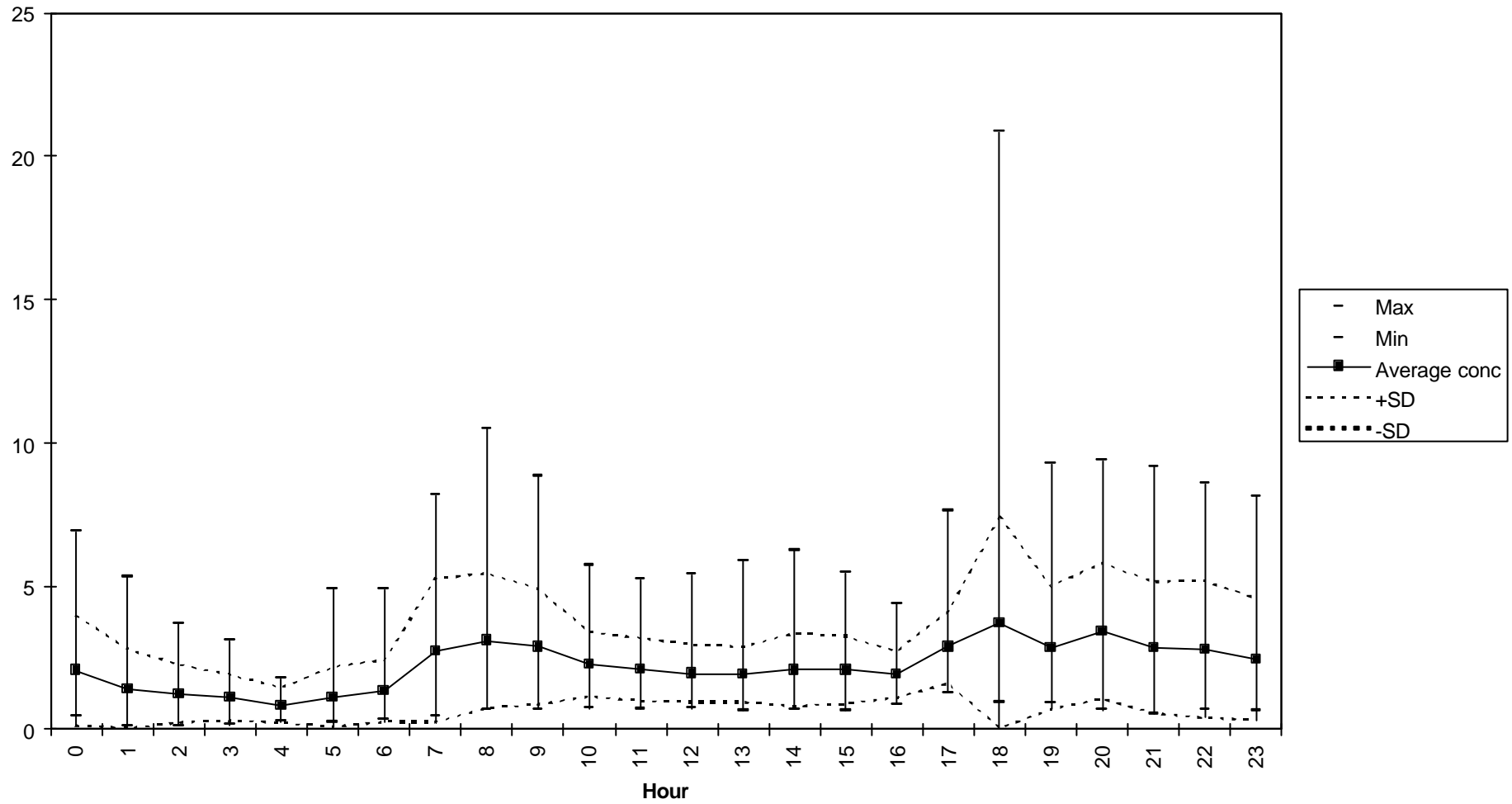


Figure 35 - Diurnal variation in formaldehyde measurements at Southampton.

Wind Speed at Southampton site

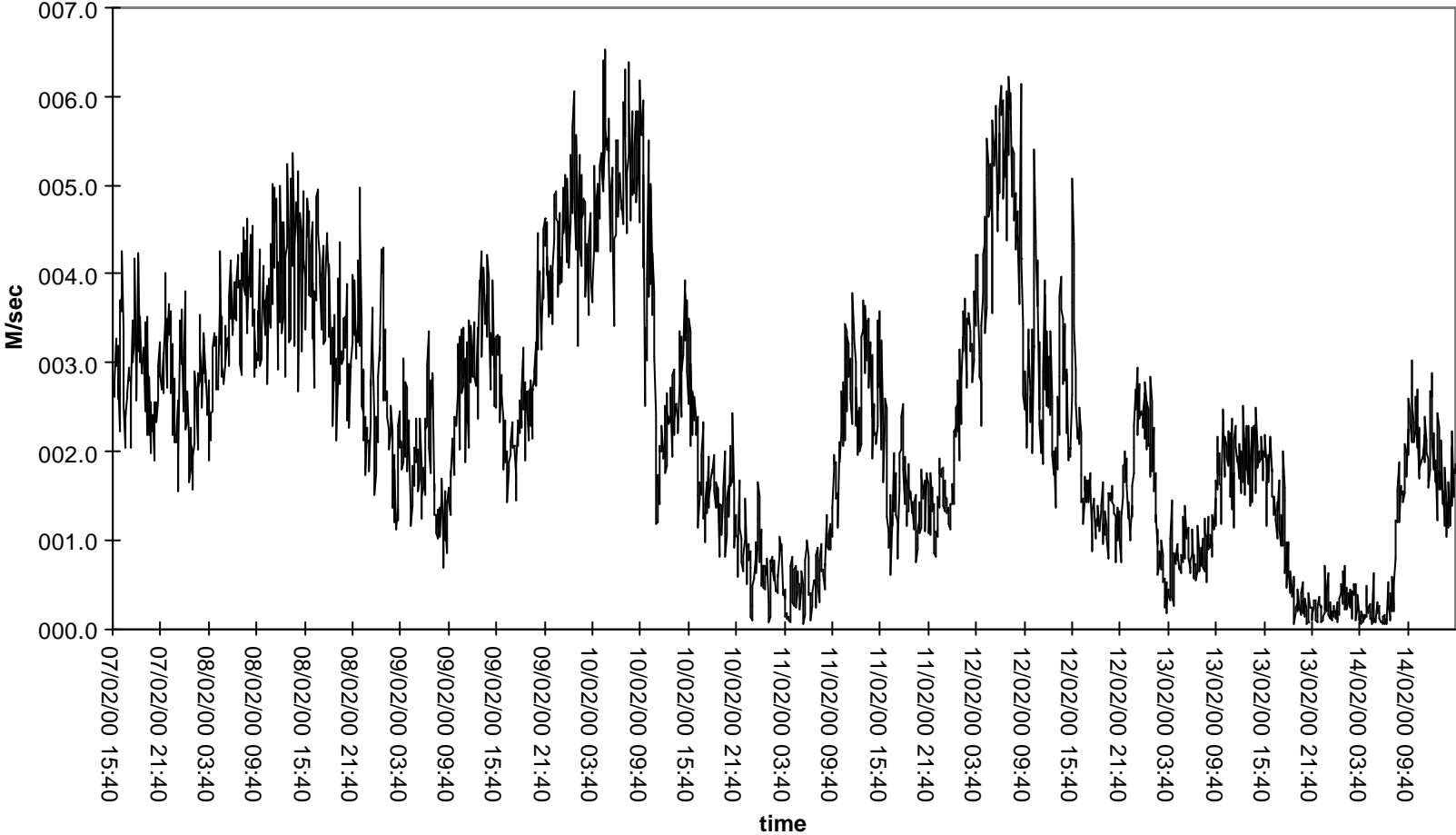


Figure 36 - Wind speed data at Southampton.

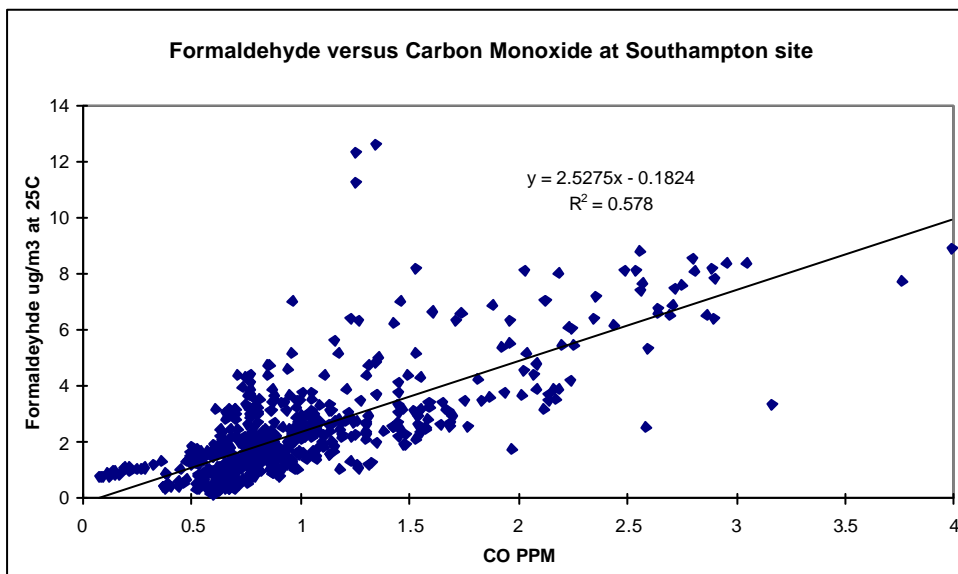
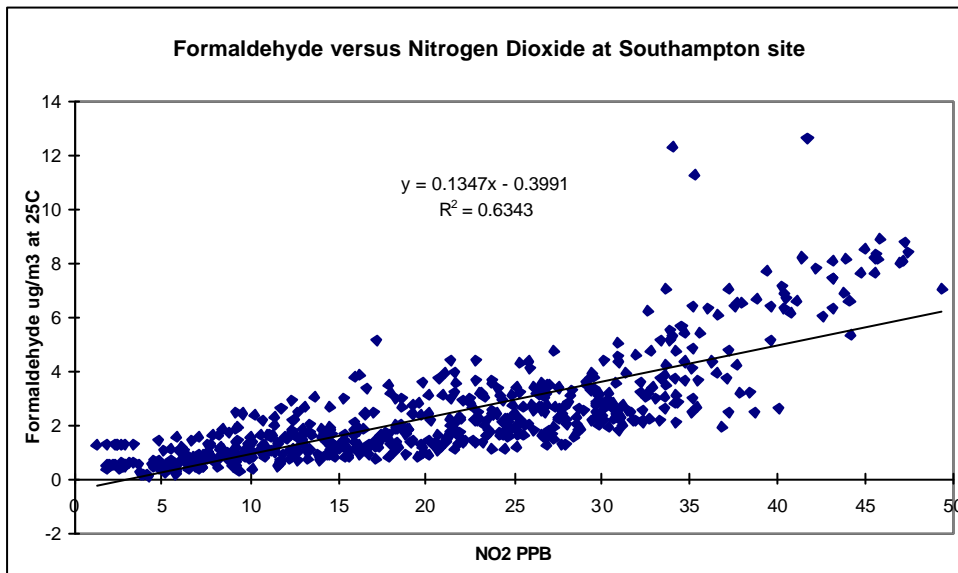
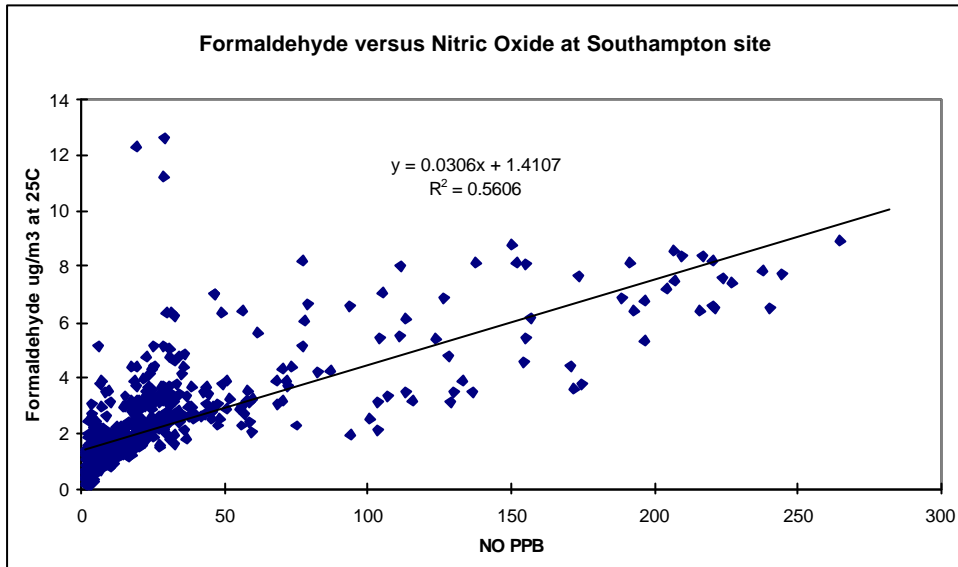


Figure 37 - Correlation of formaldehyde versus CO, NO, and NO₂.

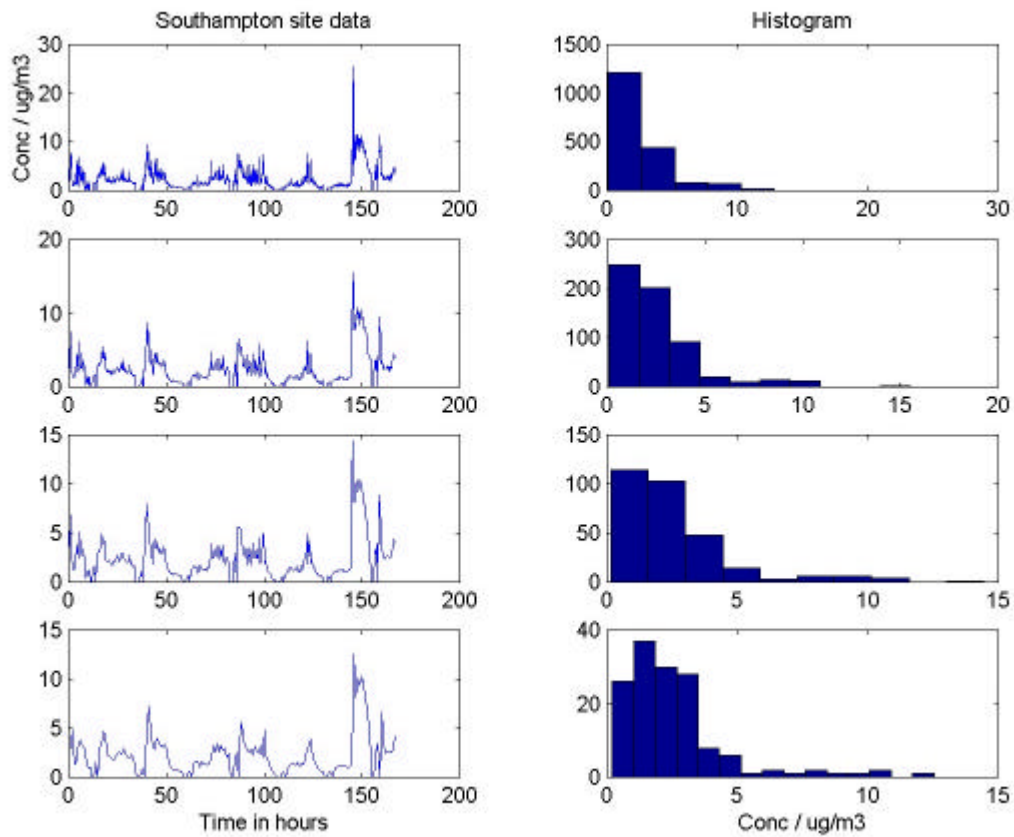


Figure 38 - Histogram (frequency - concentration) plots for formaldehyde at Southampton (averaging periods of 5,15,30 and 60 minutes are given top-bottom).

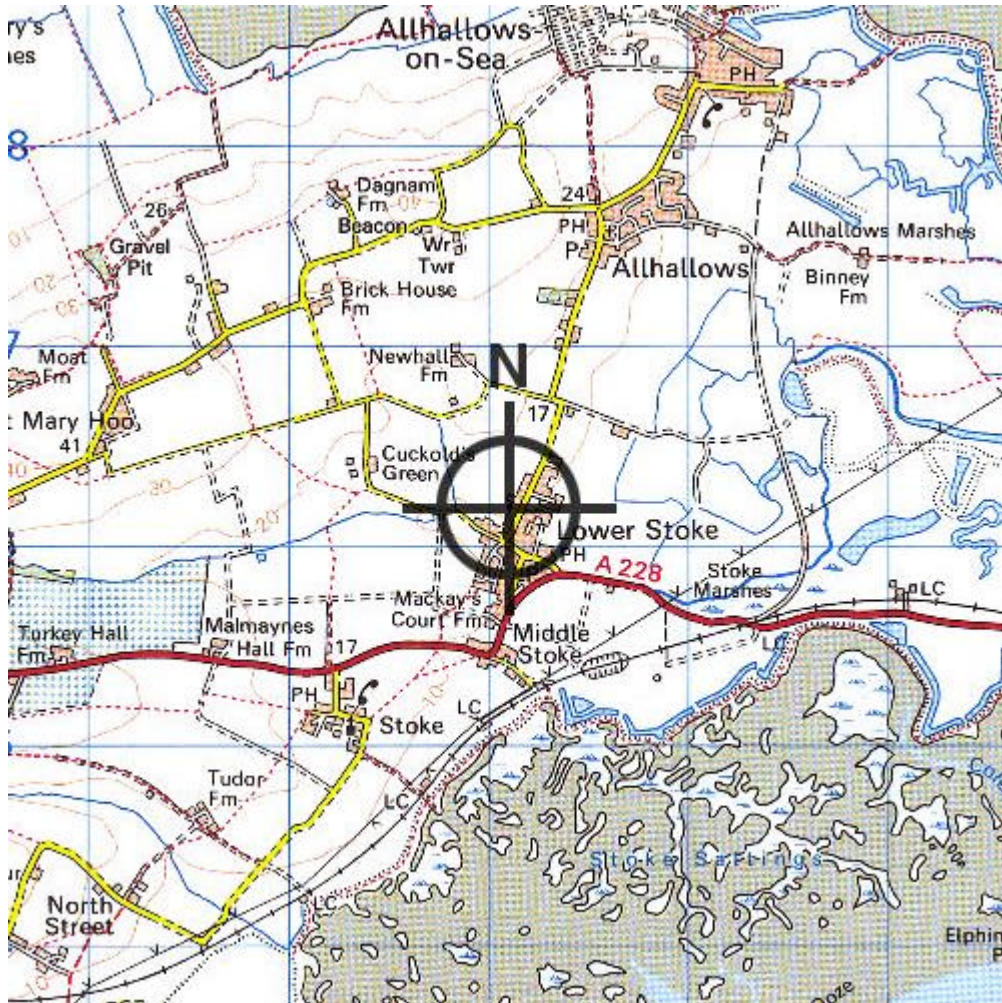


Figure 39 - Location of rural site measurements (Rochester, Kent).

Formaldehyde concentrations at Rochester site

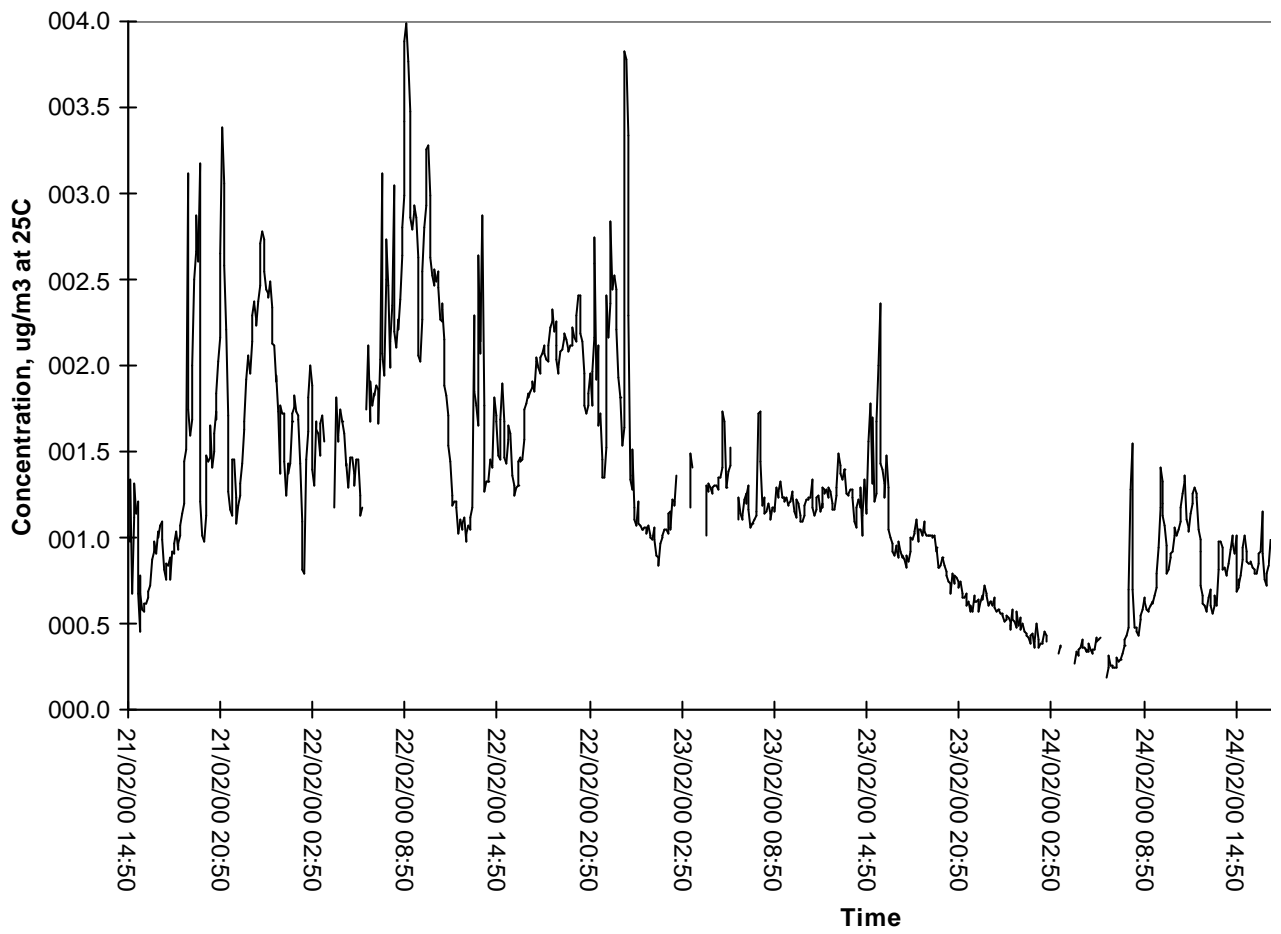


Figure 40 - Time series of formaldehyde measurements at Rochester.

NO_x and NO concentrations at Rochester site

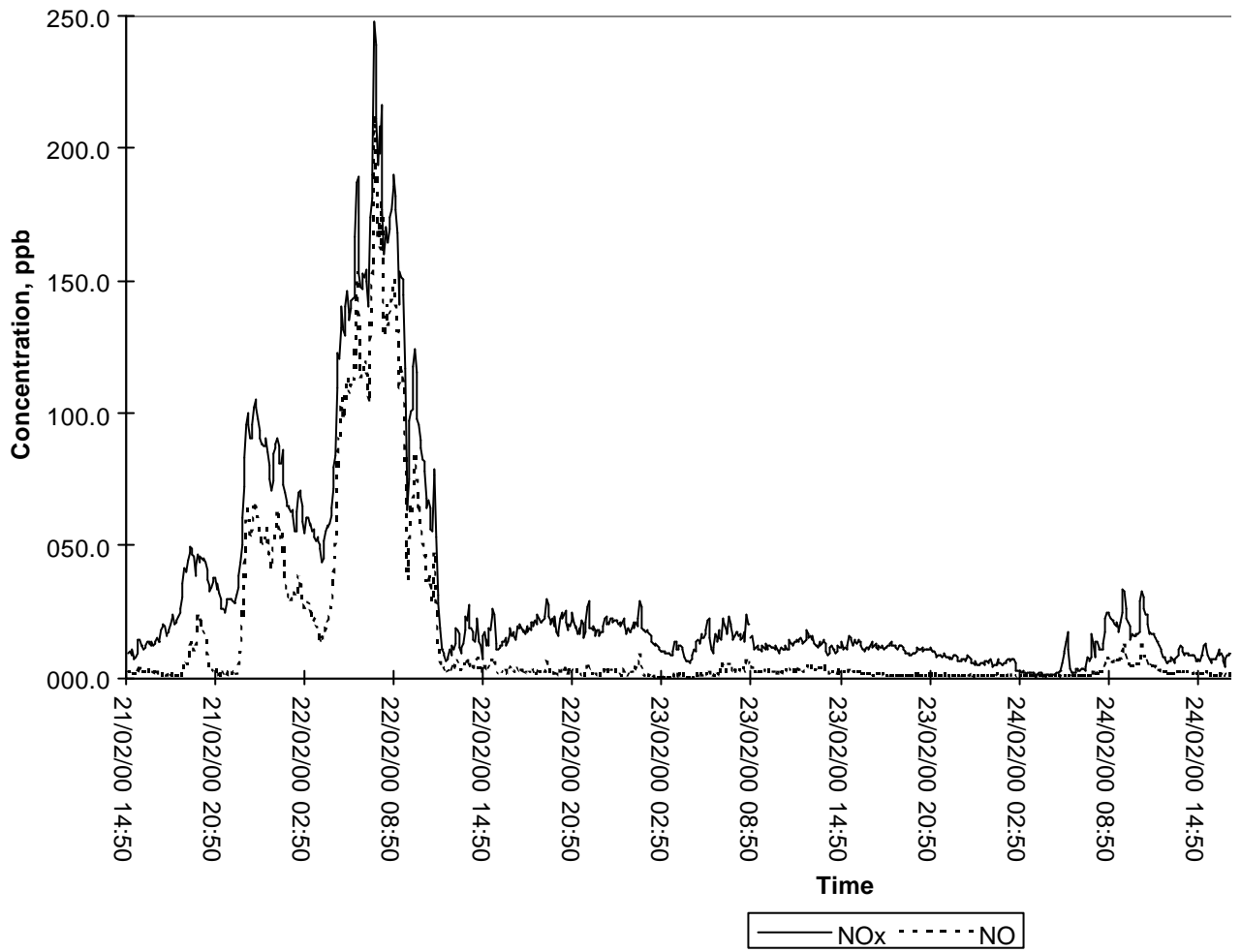


Figure 41 - Time series of NO_x/NO measurements at Rochester.

NO2 concentrations at Rochester site

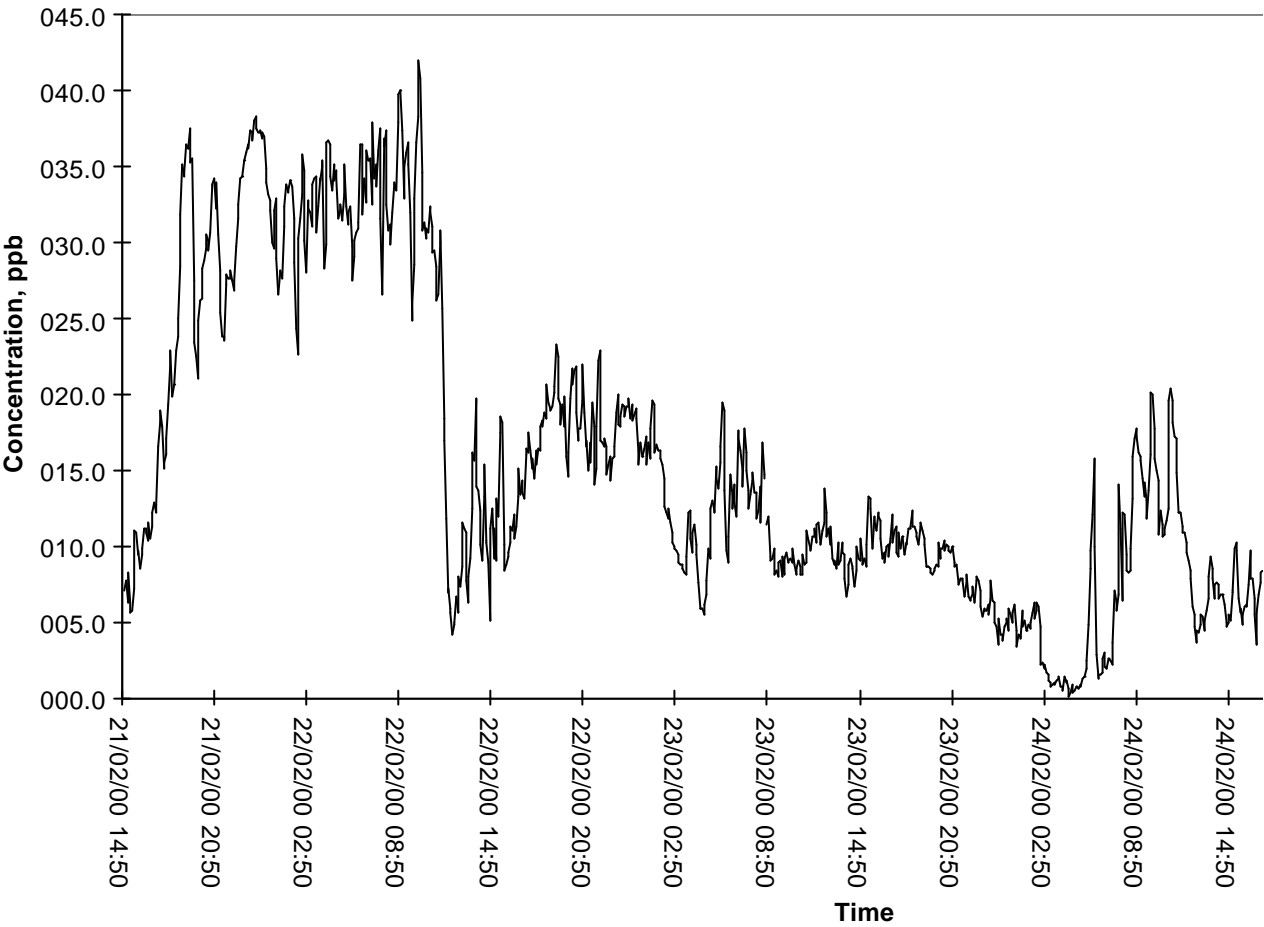


Figure 42 - Time series of NO₂ measurements at Rochester.

Ozone concentrations at Rochester site

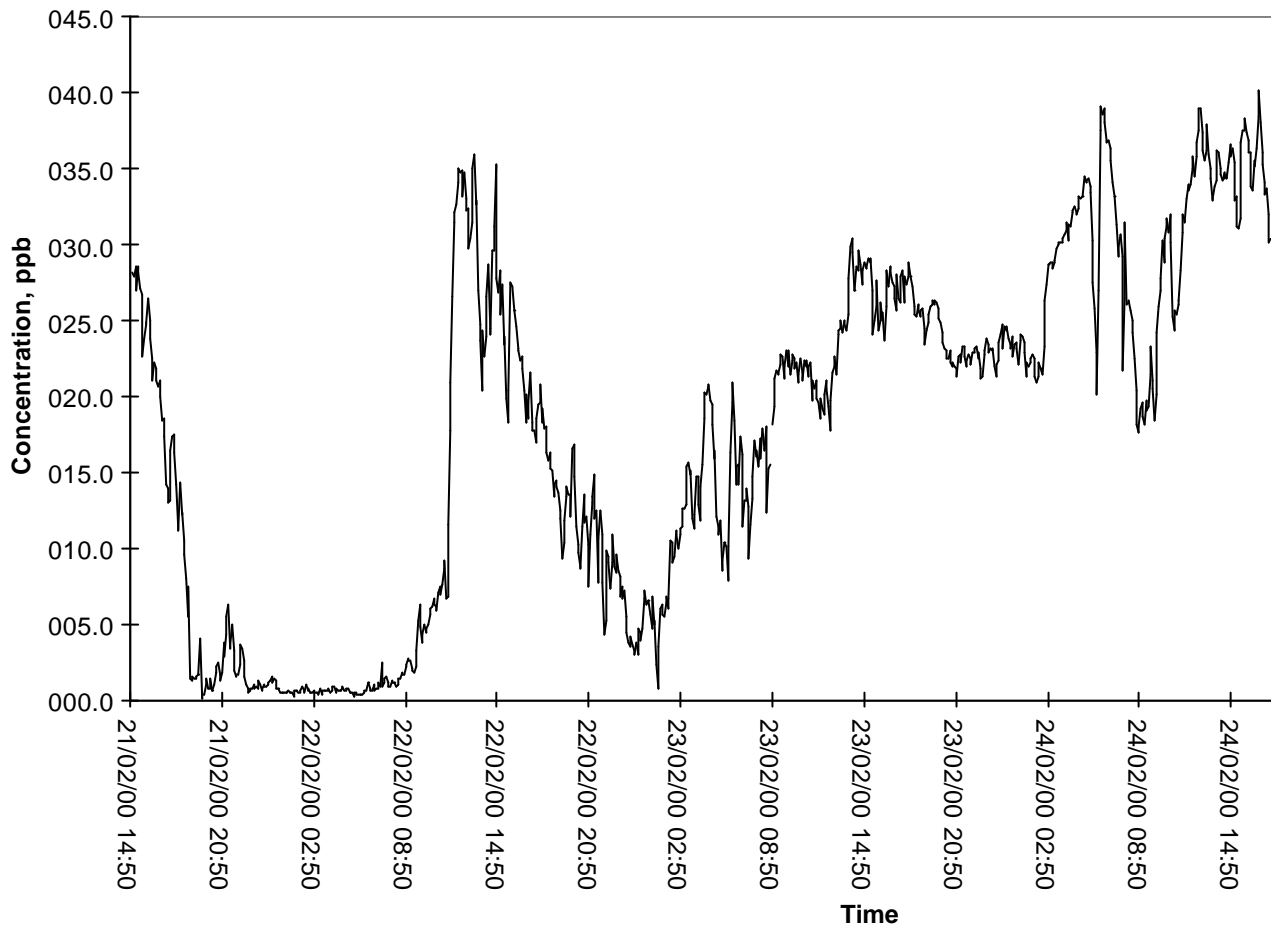


Figure 43 - Time series of O₃ measurements at Rochester.