



---

# GIS Dataset of Air Quality Management Areas

2012 Update

---



## Report for Defra and the Devolved Administrations

Unrestricted  
AEAT/ENV/R/3263  
ED46644  
Issue Number 1  
Date 28/03/2012



**Customer:**

The Department for Environment, Food and Rural Affairs, Welsh Assembly Government, the Scottish Government and the Department of the Environment for Northern Ireland

**Customer reference:**

AQ0634

**Confidentiality, copyright & reproduction:**
**© Copyright Defra**

This report is the Copyright of Defra and has been prepared by AEA Technology plc under contract to Defra dated 06/07/2010. The contents of this report may not be reproduced in whole or in part, nor passed to any organisation or person without the specific prior written permission of Defra. AEA Technology plc accepts no liability whatsoever to any third party for any loss or damage arising from any interpretation or use of the information contained in this report, or reliance on any views expressed therein.

**AEA reference:**

AEAT/ENV/R/3263

Ref: ED46644 -Issue Number 1

**Contact:**

Justin Lingard  
 AEA Technology plc  
 Gemini Building, Harwell, Didcot, OX11 0QR  
 t: 0870 190 6756  
 f: 0870 190 4850  
 e: Justin.Lingard@aeat.co.uk  
 AEA is a business name of AEA Technology plc  
 AEA is certificated to ISO9001 and ISO14001

**Author:**

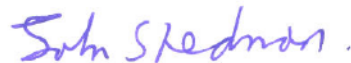
Rebecca King and Justin Lingard

**Approved By:**

John Stedman

**Date:**

28 March 2012

**Signed:**


W:\aqma\_mapping\2012update\report\2012 Updated GIS Dataset of Air Quality Management Areas\_final.docx

## Executive summary

This report presents and describes the compilation of the 2012 updated Geographical Information Systems (GIS) dataset of Air Quality Management Area (AQMA) boundaries in the UK. This new dataset includes information on changes to AQMA boundaries up to December 2011.

This dataset is compiled annually and updated on behalf of Defra and the Devolved Administrations by AEA under the UK Ambient Air Quality Assessments Contract (AAQA, AQ0634).

The information contained within the Bureau Veritas-Transport & Travel Research Ltd. AQMA archive database was used to derive a list of Local Authorities who had declared, amended or revoked AQMAs since the 2011 update (Lingard and Cooke, 2011). **42 Local Authorities** declared new AQMAs or made amendments to existing AQMAs in 2011 and **14 Local Authorities** revoked some or all of their AQMAs. These Local Authorities were contacted to request a GIS dataset describing the location and boundary of their AQMA(s). Different methods were then used to process the data received from local authorities. Maps showing the locations of the AQMAs in the UK in 2011 are presented in this report.

The Appendices to this report contain the details of the methodology used to compile the dataset in 2012 and attribute information (AQMA\_ID, Local Authority name and AQMA title) for each UK AQMA in 2011. Compilation of an updated dataset is recommended next year.

## Table of contents

<b>1</b>	<b>2012 Update</b> .....	<b>4</b>
1.1	Overview.....	4
1.2	Dataset copyright.....	4
1.3	Data gaps and future updates.....	5
1.4	Maps.....	5

### Appendices

Appendix 1	2011 UK AQMA attribute information
Appendix 2	Methodology, AQMA metadata and maps

# 1 2012 Update

## 1.1 Overview

This report presents and describes the compilation of the 2012 updated GIS dataset of Air Quality Management Area (AQMA) boundaries in the UK. This dataset is compiled annually and updated on behalf of Defra and the Devolved Administrations by AEA as part of the UK Ambient Air Quality Assessments Contract (AAQA, AQ0634). This new dataset includes information on changes to AQMA boundaries up to December 2011.

The previous dataset, the 2011 updated GIS dataset, as described in the 2011 report (Lingard and Cooke, 2011)<sup>1</sup> was also compiled and updated on behalf of Defra and the Devolved Administrations by AEA as part of the UK AAQA Contract. That dataset included the information on changes to AQMA boundaries up to December 2010. Before the 2008 GIS updated dataset, the previous datasets were compiled as part of the Neighbourhood Statistics on Ambient Air Quality Contract (RMP/2035).

Previous datasets have been used for a variety of Defra studies assessing compliance with EU legislation and public exposure to poor air quality. There is an on-going need for the dataset to be maintained and updated to reflect changes in AQMA declarations each year.

The 2008-11 datasets are available from Defra's GIS unit by contacting Carol Hryniewicz ([Carol.Hryniewicz@defra.gsi.gov.uk](mailto:Carol.Hryniewicz@defra.gsi.gov.uk)). The GIS datasets can be opened and viewed using specialised GIS software. The dataset is also available in Published Map document Format (PMF). The PMF form of the GIS dataset can also be opened and viewed in ArcReader (<http://www.esri.com/software/arcgis/arcreader/index.html>), a free, easy-to-use desktop mapping application that allows users to view, explore, and print maps. The datasets for 2005-07 are available through the Office of National Statistics Neighbourhood Statistics website (<http://www.neighbourhood.statistics.gov.uk/> – select 'Topics – Download and select tables' and navigate to 'Physical Environment' to find the AQMA dataset).

Changes to the UK AQMAs are described in this report and maps showing the locations of the AQMAs in the UK in 2011 are provided. A list of all UK AQMAs in 2011 and details of the methodology applied to compile the dataset are provided in the Appendices of this report.

## 1.2 Dataset copyright

The AQMAs that have been digitized using the OS raster maps retain the OS copyright inherent to the raster maps (© Crown copyright. All rights reserved Defra, Licence number 100022861 [2012]). Defra's GIS division will distribute this dataset and provide a user license for Ordnance Survey derived data, which explains the limitations of its use. The text in the License agreement reads: "You may only use the Data for your own internal business use that is use of Data for the internal administration and operation of your business and not for any commercial purpose, and not for financial profit or gain. Financial gain would include any profit whether direct or indirect, or benefit from the use or publication of the Data in any form".

---

<sup>1</sup> Lingard, J.J.N., and Cooke, S.L.: 2011 Updated GIS Dataset of Air Quality Management Areas. AEA Report number AEAT/ENV/R/3161, 2011. [http://uk-air.defra.gov.uk/reports/cat09/1202160916\\_2011\\_Updated\\_GIS\\_Dataset\\_of\\_Air\\_Quality\\_Management\\_Areas\\_final.pdf](http://uk-air.defra.gov.uk/reports/cat09/1202160916_2011_Updated_GIS_Dataset_of_Air_Quality_Management_Areas_final.pdf)

### 1.3 Data gaps and future updates

All the Local Authorities contacted in 2012 as part of this work responded and provided sufficient data to enable generation of GIS data describing the extent and location of the AQMA(s) within their boundaries.

Compilation of an updated dataset is recommended next year.

### 1.4 Maps

The information contained within the Bureau Veritas-Transport & Travel Research Ltd. AQMA archive database (Girnary, 2012)<sup>2</sup> was used to derive a list of local authorities in which the AQMAs had changed in some way since the preparation of the 2011 update (Lingard and Cooke, 2011).

**42 Local Authorities** declared new AQMAs or made amendments to existing AQMAs in 2011 and **14 Local Authorities** revoked some or all of their AQMAs. These Local Authorities were contacted to request a GIS dataset describing the location and boundary of their AQMA(s). Table 1 provides a list of Local Authorities who declared AQMAs or amended existing AQMAs in 2011. Table 2 provides a list of Local Authorities who revoked some or all their AQMAs in 2011.

**Table 1 Newly declared or amended AQMAs in 2011.**

Local Authority	AQMA ID(s)
Aberdeen City Council	1, 684
Bracknell Forest Borough Council	677, 678
Bromsgrove District Council	1372
Cardiff County Council	846
Carmarthenshire County Council	1479
Castlereagh Borough Council	679
Cheltenham Borough Council	1480
Cheshire East Council	1362, 1478
Cheshire West and Chester Council	844
Derry City Council	1481, 1482
Durham County Council	688
East Devon District Council	1363
East Dunbartonshire Council	691
Epping Forest District Council	847
Exeter City Council	290
Falkirk Council	845
Fife Council	1364
Gedling Borough Council	680
Halton Borough Council	1365, 1367
Horsham District Council	1368
Ipswich Borough Council	681
King's Lynn and West Norfolk Borough Council	1493
Newport City Council	849, 850
North Devon District Council	851
North Lanarkshire Council	852, 853
Norwich City Council	1494

<sup>2</sup> Girnary, S., Personal communication, 2012.

**Table 1 (cont.) AQMAs declared or amended in 2011.**

Local Authority	AQMA ID(s)
Pendle Borough Council	689
Poole Borough Council	1361
Reigate and Banstead Borough Council	692, 693
Ribble Valley Borough Council	675
Rushcliffe Borough Council	857
South Kesteven District Council	854
South Staffordshire District Council	1495
St Helens Metropolitan Borough Council	1483, 1484
Stoke-on-Trent City Council	855
Swale Borough Council	687
Tunbridge Wells Borough Council	399
Warrington Borough Council	856
West Berkshire Council	1477
West Dorset District Council	1371
West Lothian Council	676
Wiltshire Council	690, 1486

**Table 2 AQMAs revoked in 2011.**

Local Authority	AQMA ID(s)
Antrim Borough Council	252
Ballymoney Borough Council	360
Breckland District Council	302
Broadland District Council	570
Cheltenham Borough Council	586
Cheshire West and Chester Council	615
Epping Forest District Council	526
Plymouth City Council	355
Portsmouth City Council	329, 330, 331, 332, 333, 336, 338, 341
Rotherham Metropolitan Borough Council	219, 260
Rushmoor Borough Council	261
South Kesteven District Council	123, 124, 125
South Staffordshire District Council	433
Stoke-on-Trent City Council	126

Figure 1.1 shows the location of all the AQMAs in the UK. The insert maps in Figure 1.1 show the location of AQMAs around the major urban conurbations of the UK (clockwise from top right): Edinburgh-Glasgow, Liverpool-Manchester, Leeds-Sheffield, London, Swansea-Cardiff, Birmingham, and Belfast. Detailed maps showing the locations of the UK AQMAs in 2011 are shown Figure 1.2 to Figure 1.9. The AQMA\_IDs of each AQMA within the mapped area are shown on each Figure. Appendix 1 provides a look-up table containing further attribute information, e.g., Local Authority name, and AQMA title.

Figure 1.1 Map showing all UK AQMAs.

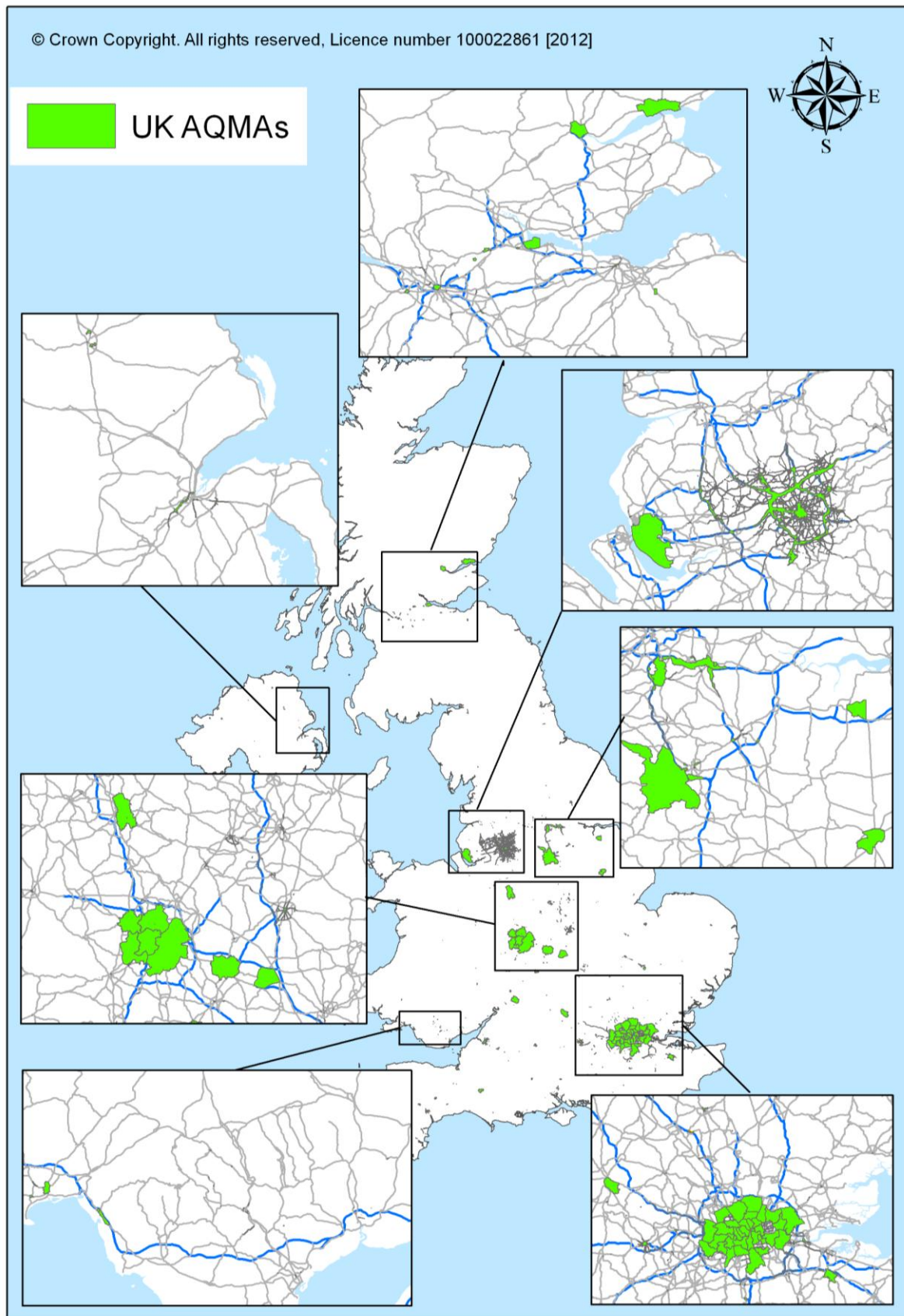
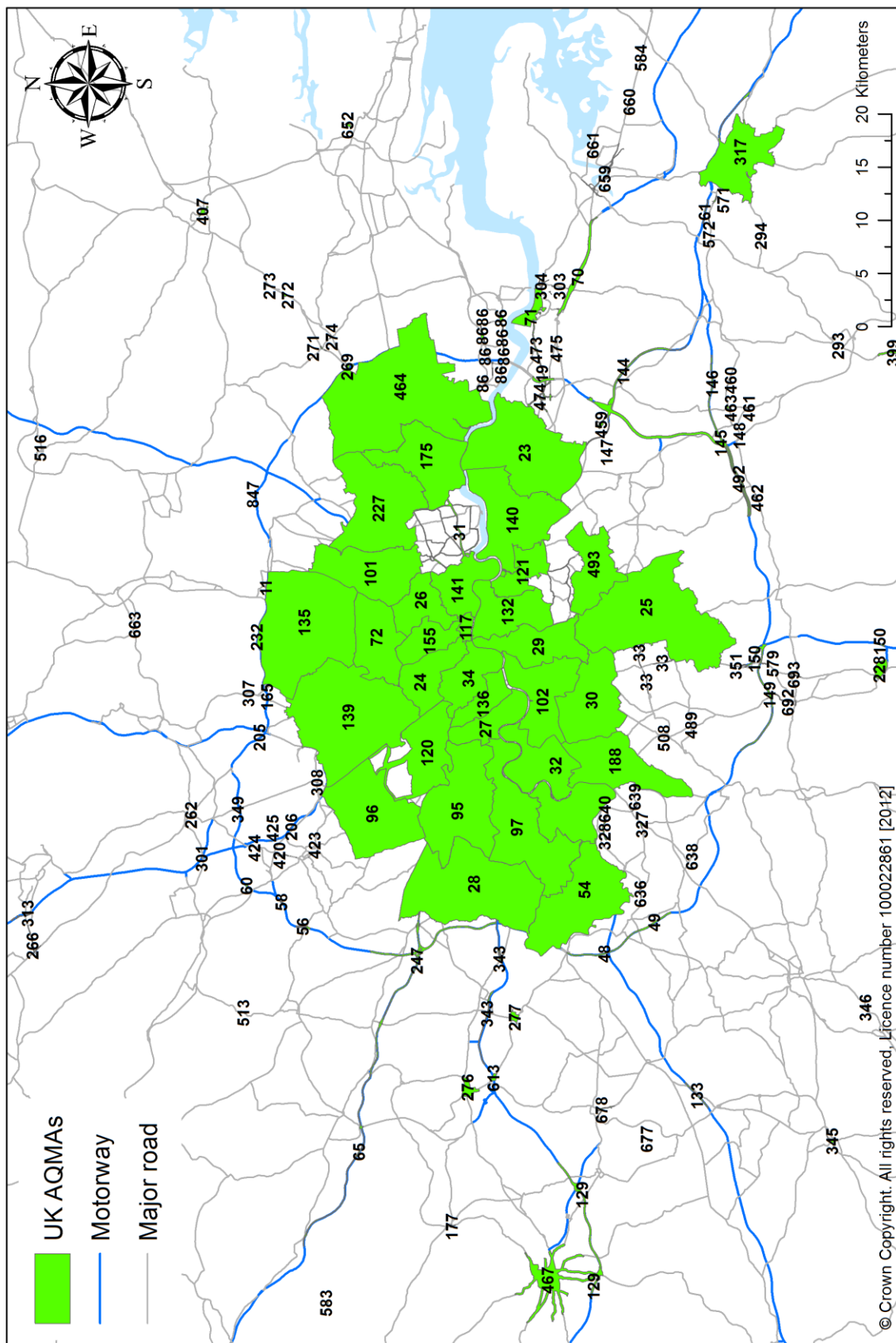
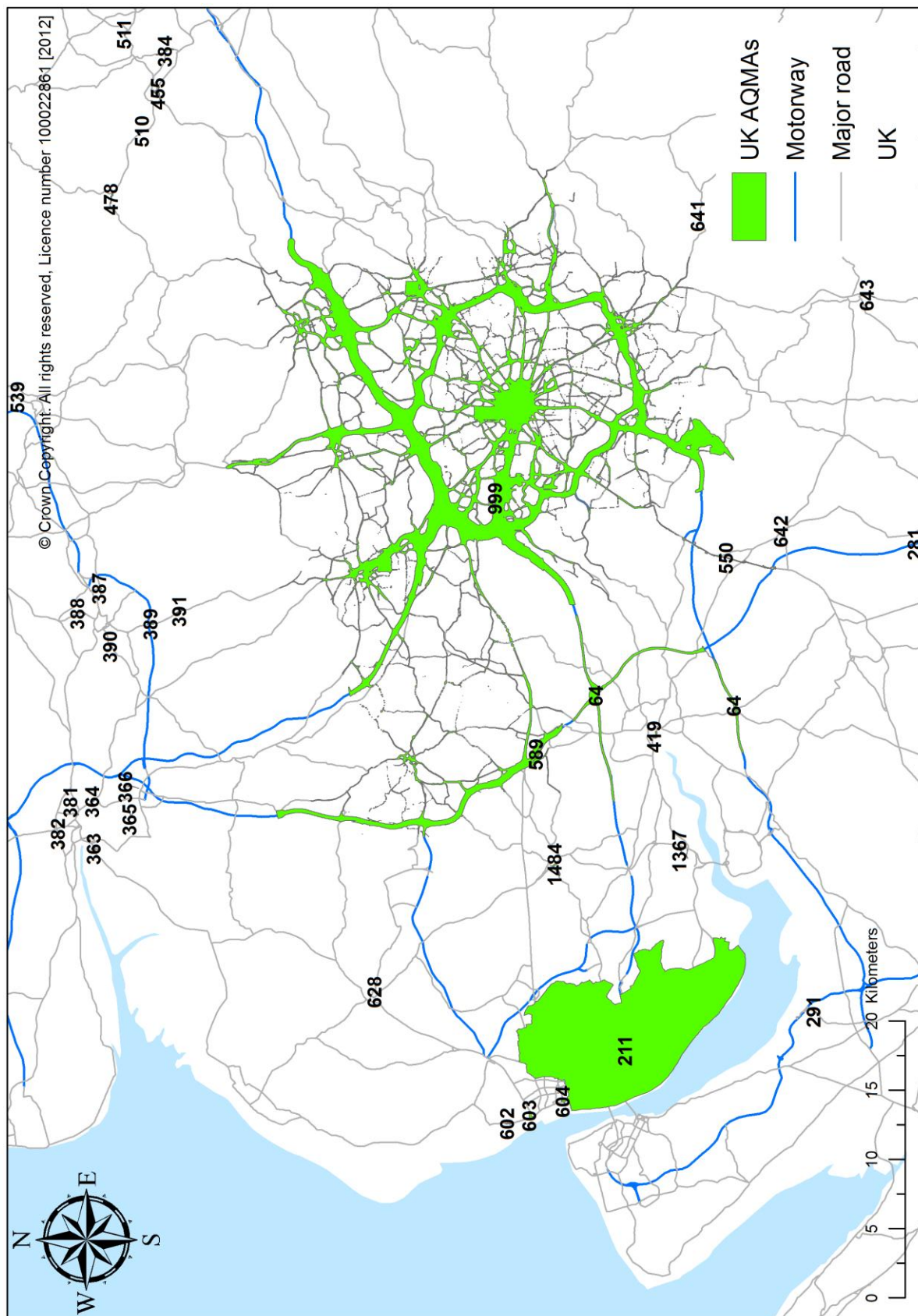




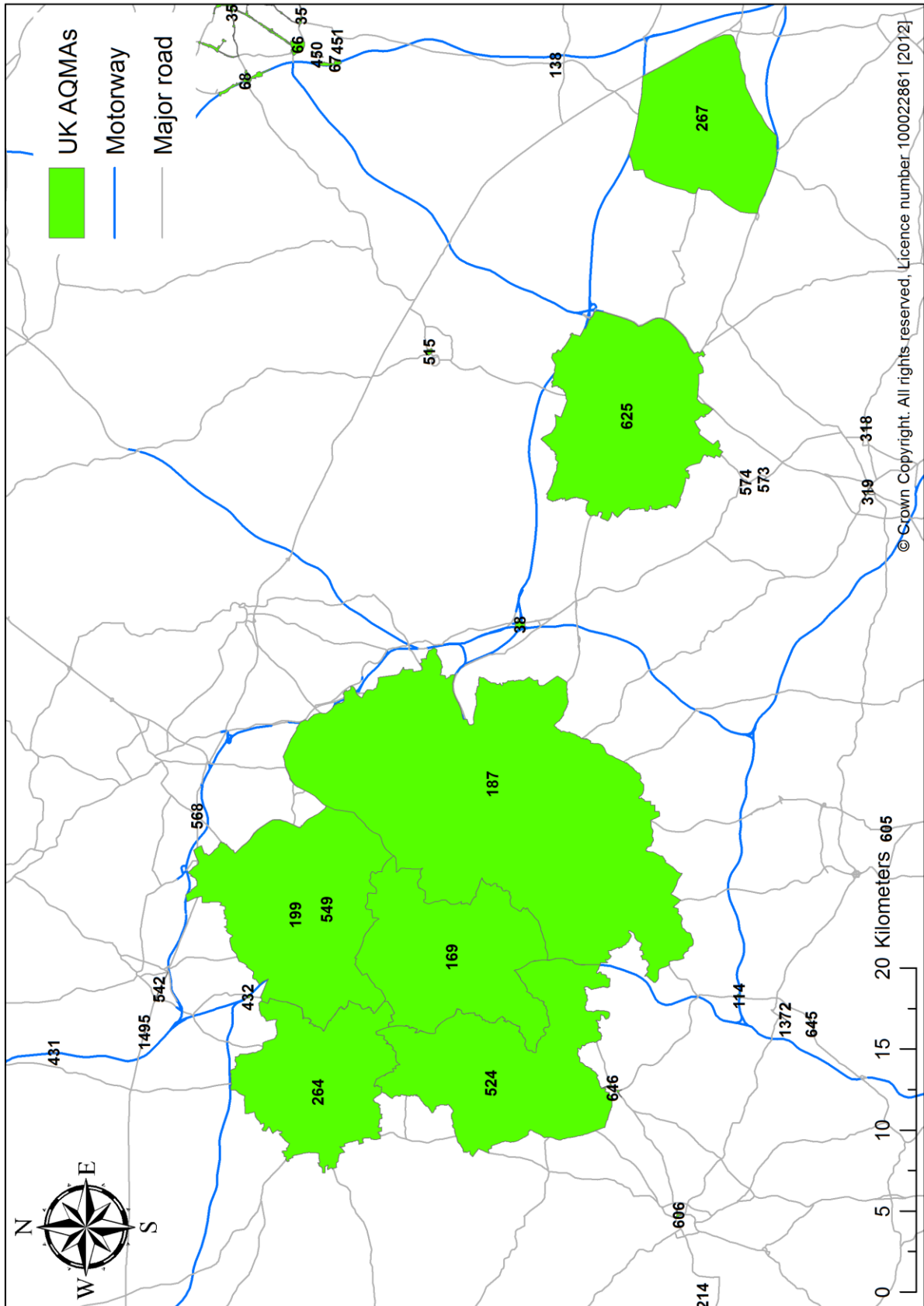
Figure 1.2 AQMAs in London and the surrounding area.



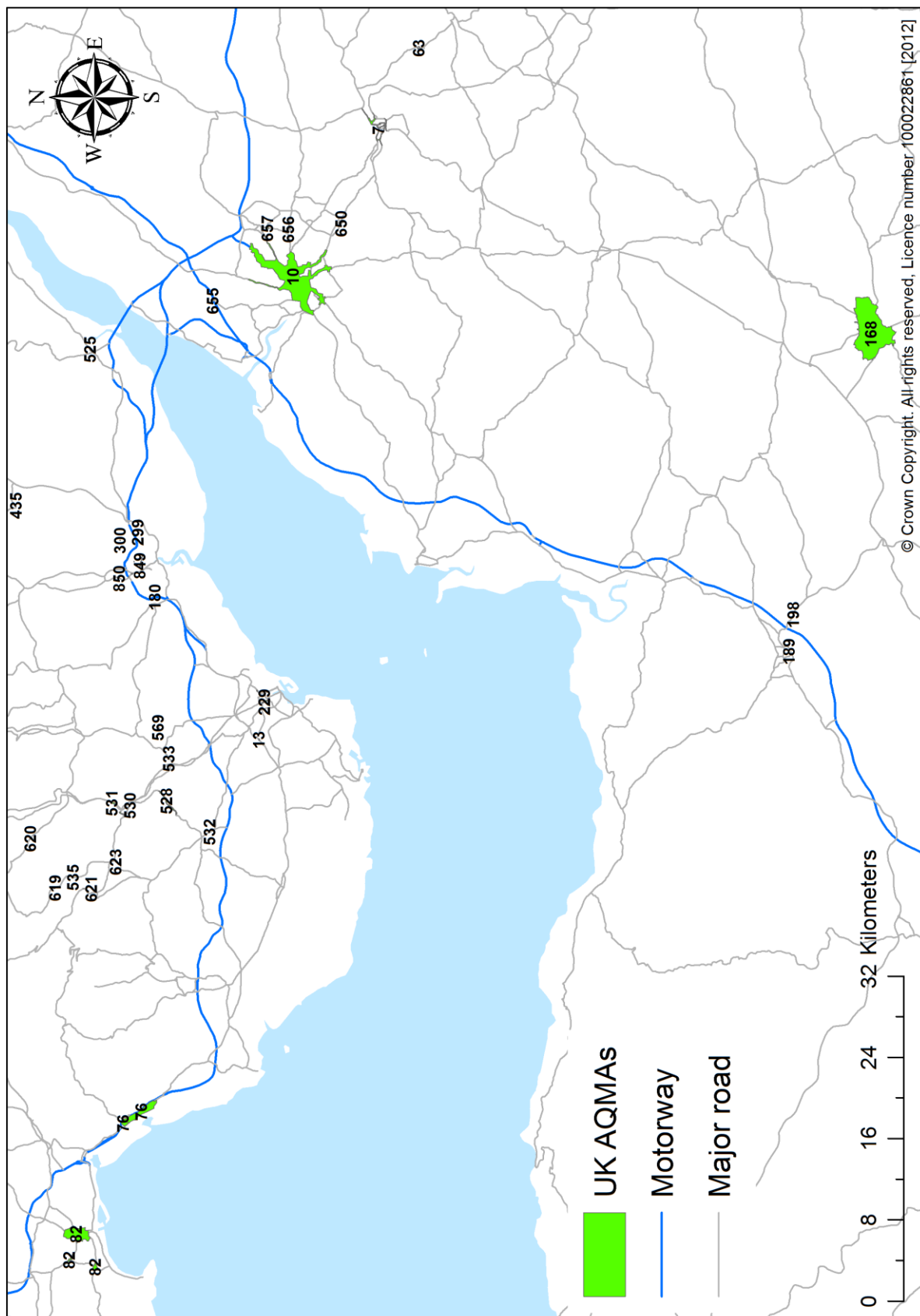
**Figure 1.3 AQMAs of Liverpool, Blackburn, Cheshire East, Cheshire West & Chester, Preston, South Ribble, Ribble Valley, Warrington, Burnley, Calderdale, Sefton, St. Helens, Halton and the Greater Manchester area.**



**Figure 1.4 AQMAs of Birmingham, Sandwell, Walsall, Warwick, Lichfield, Cannock Chase, Dudley, North Warwickshire, Wolverhampton, South Staffordshire, Wyre Forest, Coventry, Rugby, Stratford-on-Avon, Nuneaton, Harborough and Bromsgrove.**

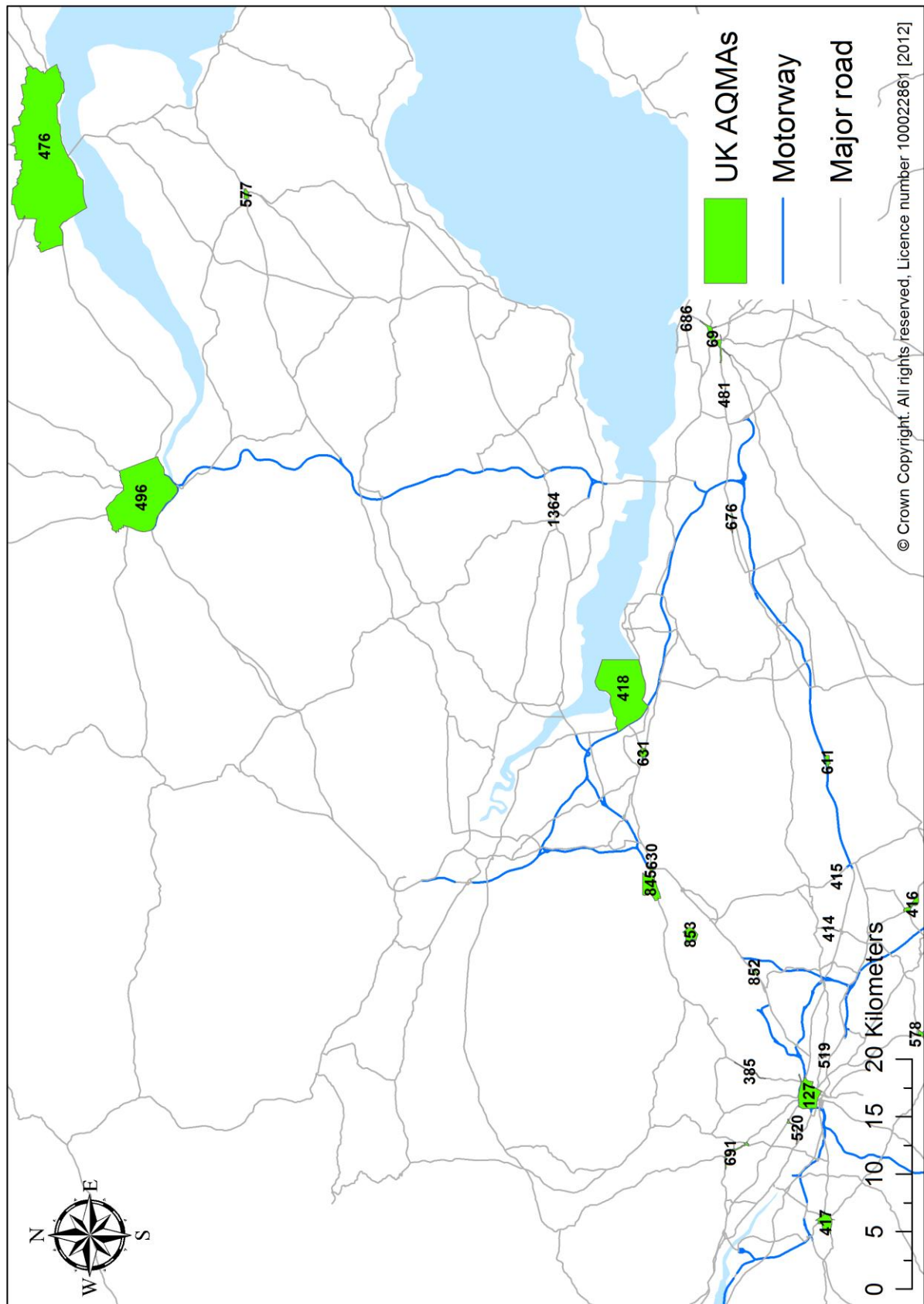


**Figure 1.5 AQMAs of Bristol, Cardiff, Neath Port Talbot, Swansea, Caerphilly, Taunton, Rhondda-Cynon-Taff, Bath and North East Somerset, South Somerset, Wiltshire, Monmouthshire and Newport.**



© Crown Copyright. All rights reserved, Licence number 100022861 (2012)

Figure 1.6 AQMAs of Glasgow, Edinburgh, Falkirk, Dundee, East Dunbartonshire, North Lanarkshire, South Lanarkshire, Perth and Kinross, Fife, Midlothian, West Lothian and Renfrewshire.



**Figure 1.7 AQMAs of Antrim, Ballymena, Ballymoney, Newtonabbey, Castlereagh and Belfast.**

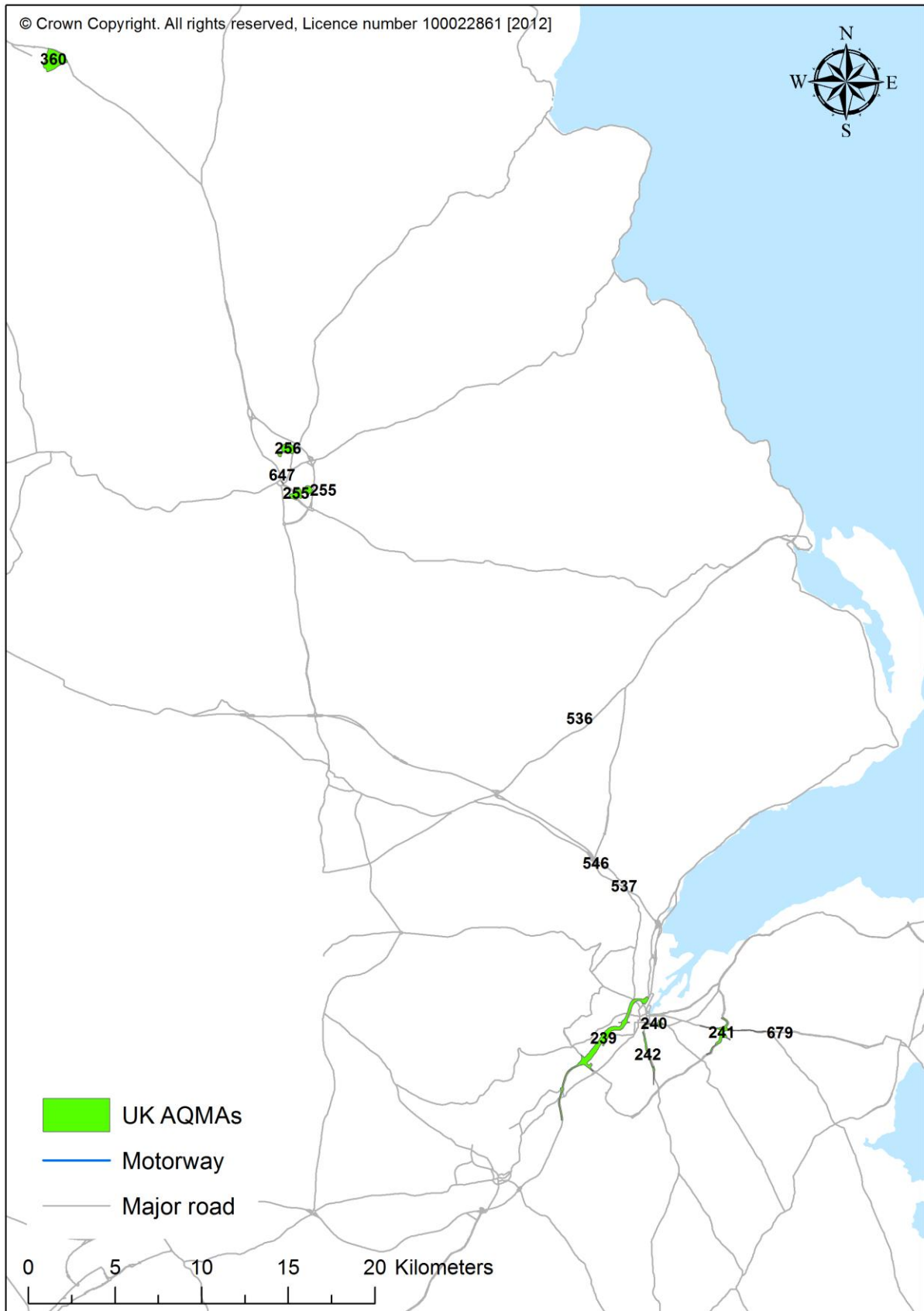
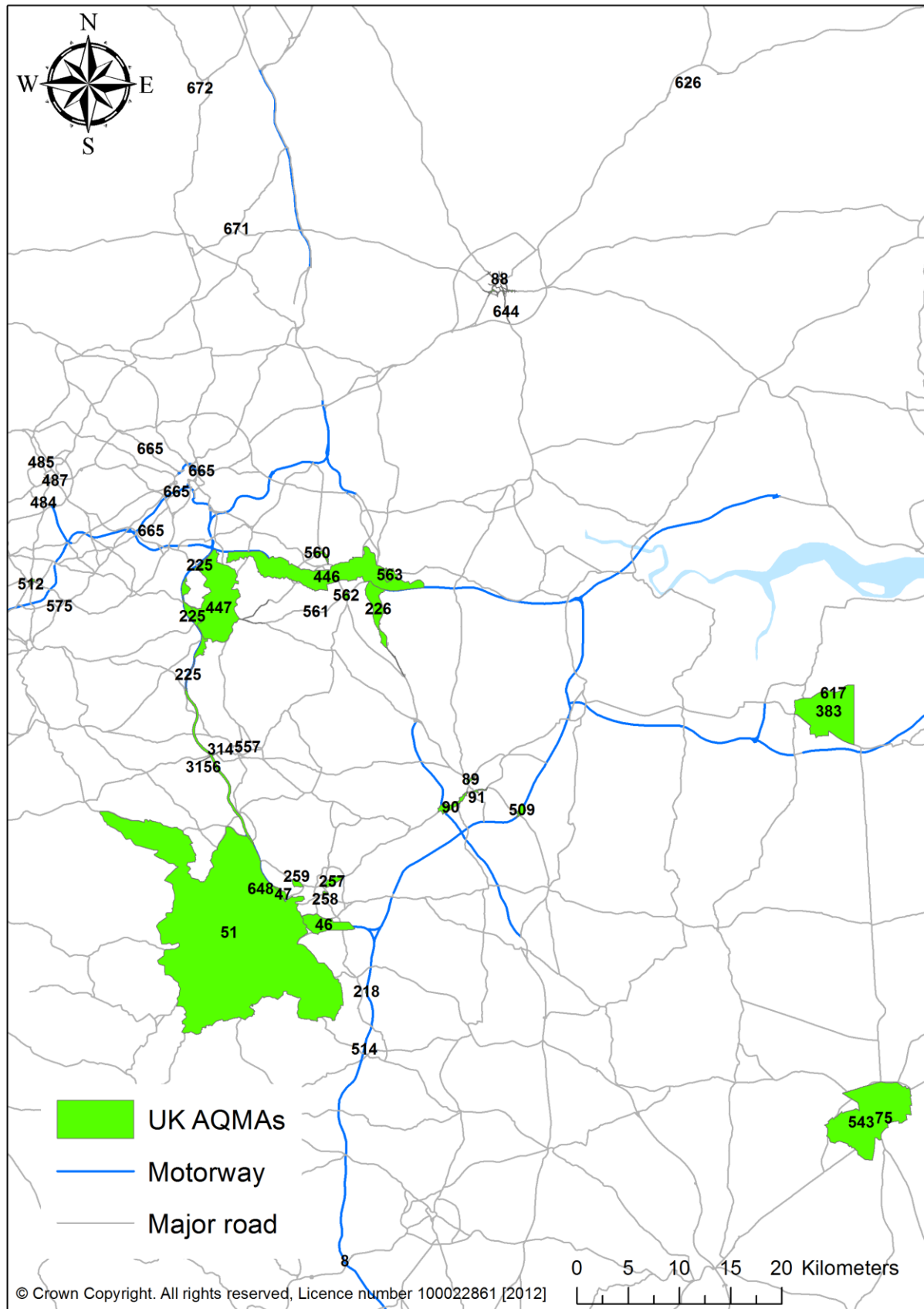
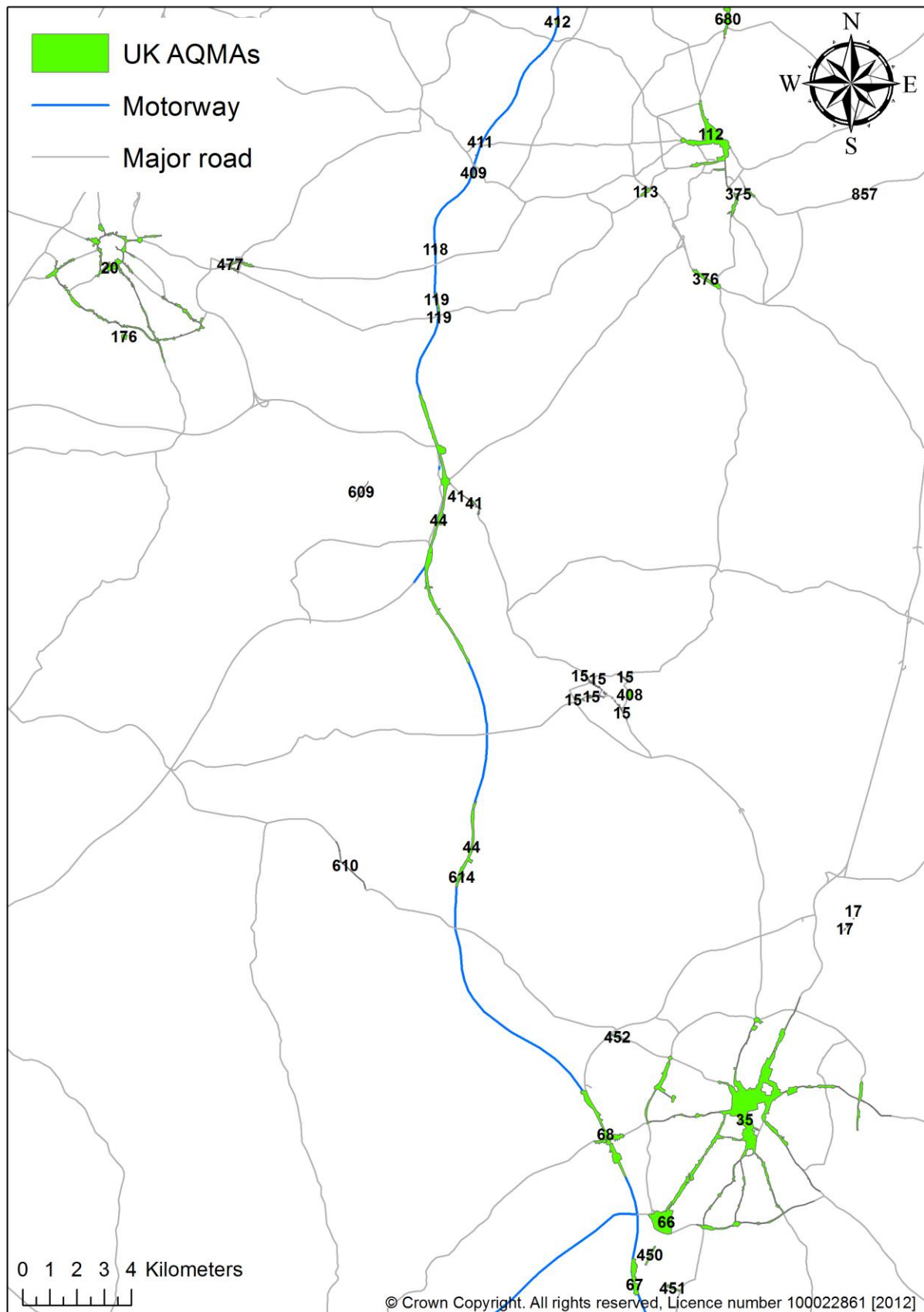


Figure 1.8 AQMAs of Leeds, Sheffield, Rotherham, Bolsover, Doncaster, Barnsley, Harrogate, York and Wakefield.



**Figure 1.9 AQMAs of Leicester, Blaby, Broxtowe, Charnwood, North West Leicestershire, Derby, Erewash, Rushcliffe, Gedling and Nottingham.**





# Appendices

Appendix 1: 2011 UK AQMA attribute information

Appendix 2: Methodology, AQMA metadata and maps

## Appendix 1 – 2011 UK AQMA attribute information

Table A.1 provides attribute information for each UK AQMA in 2011 listed by AQMA\_ID.

**Table A.1 2011 UK AQMA attribute information.**

AQMA_ID	LOCAL_AUTH	TITLE
1	Aberdeen City Council	Aberdeen City Centre AQMA
6	Barnsley Metropolitan Borough Council	Barnsley AQMA No.1
7	Bath & North East Somerset Council	Bath AQMA
8	Bolsover District Council	South Normanton AQMA
9	Boston Borough Council	Boston AQMA
10	Bristol City Council	Bristol AQMA
11	Broxbourne Borough Council	Broxbourne AQMA No. 1
13	Cardiff County Council	Ely Bridge (formerly Cardiff West)
15	Charnwood Borough Council	Loughborough AQMA
17	Charnwood Borough Council	Syston AQMA
18	Colchester Borough Council	Colchester AQMA No.1
19	Dartford Borough Council	Dartford AQMA No.1
20	Derby City Council	Derby NO2 AQMA No.1: Ring Roads
22	Herefordshire Council	Hereford AQMA
23	Bexley, London Borough of	Bexley AQMA
24	Camden, London Borough of	Camden AQMA
25	Croydon, London Borough of	Croydon AQMA
26	Hackney, London Borough of	Hackney AQMA
27	Hammersmith & Fulham, London Borough of	Hammersmith and Fulham AQMA
28	Hillingdon, London Borough of	Hillingdon AQMA
29	Lambeth, London Borough of	Lambeth AQMA
30	Merton, London Borough of	Merton AQMA
31	Newham, London Borough of	Newham AQMA
32	Richmond, London Borough of	Richmond AQMA
33	Sutton, London Borough of	Sutton AQMA
34	Westminster, London Borough of	Westminster AQMA
35	Leicester City Council	Leicester AQMA
38	North Warwickshire Borough Council	Coleshill AQMA
41	North West Leicestershire District Council	Kegworth AQMA
44	North West Leicestershire District Council	M1 AQMA
46	Rotherham Metropolitan Borough Council	Rotherham AQMA 1 - Part1 (NO2)
47	Rotherham Metropolitan Borough Council	Rotherham AQMA 1 - Part 2 (NO2)
48	Runnymede Borough Council	Area 1
49	Runnymede Borough Council	Area 2
51	Sheffield City Council	Sheffield Citywide AQMA
54	Spelthorne Borough Council	Spelthorne AQMA

56	Three Rivers District Council	Chorley Wood NO2 AQMA
57	Three Rivers District Council	Chorleywood PM10 AQMA
58	Three Rivers District Council	Chandlers Cross NO2 AQMA
59	Three Rivers District Council	Chandlers Cross PM10 AQMA
60	Three Rivers District Council	Kings Langley NO2 AQMA
61	Tonbridge and Malling Borough Council	Tonbridge and Malling - M20 AQMA
62	Wiltshire Council	Westbury AQMA
63	Wiltshire Council	Bradford-on-Avon AQMA
64	Warrington Borough Council	Warrington AQMA No.1
65	Wycombe District Council	Wycombe AQMA
66	Blaby District Council	AQMA 1
67	Blaby District Council	AQMA 2
68	Blaby District Council	AQMA 3
69	Edinburgh City Council	Edinburgh AQMA No.1 (City Centre)
70	Gravesham Borough Council	Gravesham A2 AQMA
71	Gravesham Borough Council	Northfleet Industrial Area AQMA
72	Haringey, London Borough of	Haringey AQMA
75	Lincoln City Council	Lincoln AQMA
76	Neath & Port Talbot County Borough Council	Neath Port Talbot AQMA Taibach/Margam
82	City and County of Swansea	Swansea AQMA
86	Thurrock Council	Thurrock AQMA
88	York City Council	York AQMA No.1
89	Doncaster Metropolitan Borough Council	AQMA No.1
90	Doncaster Metropolitan Borough Council	AQMA No.2
91	Doncaster Metropolitan Borough Council	AQMA No.3
95	Ealing, London Borough of	Ealing AQMA
96	Harrow, London Borough of	Harrow AQMA
97	Hounslow, London Borough of	Hounslow AQMA
101	Waltham Forest, London Borough of	Waltham Forest AQMA
102	Wandsworth, London Borough of	Wandsworth AQMA
104	Wiltshire Council	City Centre AQMA
112	Nottingham City Council	AQMA No.2
113	Nottingham City Council	AQMA No.3
114	Bromsgrove District Council	Lickley End AQMA
117	Corporation of the City of London	City of London AQMA
118	Erewash Borough Council	AQMA No.1
119	Erewash Borough Council	AQMA No.2
120	Brent, London Borough of	Brent AQMA
121	Lewisham, London Borough of	Lewisham AQMA
122	South Kesteven District Council	No.1
127	Glasgow City Council	Glasgow City Centre AQMA
129	Wokingham District Council	Wokingham AQMA
130	Fenland District Council	Wisbech AQMA No.1 (SO2)
131	Fenland District Council	Wisbech AQMA No.2 (PM10)
132	Southwark, London Borough of	Southwark AQMA

133	Surrey Heath District Council	Surrey Heath AQMA
135	Enfield, London Borough of	Enfield AQMA
136	Kensington & Chelsea, Royal Borough of	Kensington and Chelsea AQMA
138	Harborough District Council	Lutterworth AQMA
139	Barnet, London Borough of	Barnet AQMA
140	Greenwich, London Borough of	Greenwich AQMA
141	Tower Hamlets, London Borough of	Tower Hamlets AQMA
144	Sevenoaks District Council	AQMA No.1 (M20)
145	Sevenoaks District Council	AQMA No.2 (M25)
146	Sevenoaks District Council	AQMA No.3 (M26)
147	Sevenoaks District Council	AQMA No.4 (A20(T))
148	Sevenoaks District Council	AQMA No. 5 (Riverhead)
149	Reigate and Banstead Borough Council	AQMA No.1 (M25)
150	Reigate and Banstead Borough Council	AQMA No.2
155	Islington, London Borough of	Islington AQMA
165	Hertsmere Borough Council	Hertsmere AQMA No. 1
167	Dover District Council	Dover Docks AQMA
168	South Somerset District Council	Yeovil AQMA
169	Sandwell Metropolitan Borough Council	Sandwell AQMA
175	Barking and Dagenham, London Borough of	Barking and Dagenham AQMA
176	Derby City Council	Derby PM10 AQMA
177	South Oxfordshire District Council	Henley AQMA
179	Northampton Borough Council	Northampton AQMA No.1
180	Newport City Council	Glasllwch AQMA
182	Newport City Council	Shaftesbury/Crindau AQMA
183	Newport City Council	St Julians AQMA
187	Birmingham City Council	Birmingham AQMA
188	Kingston upon Thames, Royal Borough of	Kingston upon Thames AQMA
189	Taunton Deane Borough Council	East Reach AQMA
191	Shropshire Council	AQMA No.1
192	Shropshire Council	AQMA No.2
193	Shropshire Council	AQMA No.3 (amended)
198	Taunton Deane Borough Council	Henlade AQMA
199	Walsall Metropolitan Borough Council	Walsall AQMA
204	Hertsmere Borough Council	Hertsmere AQMA No. 2
205	Hertsmere Borough Council	Hertsmere AQMA No. 3
206	Hertsmere Borough Council	Hertsmere AQMA No. 4
207	Norwich City Council	Norwich City Council AQMA No.1 (St Augustines)
208	Norwich City Council	Norwich City Council AQMA No.2 (Grapes Hill)
209	Norwich City Council	Norwich City Council AQMA No.3 (Castle AQMA)
210	Shropshire Council	Oswestry AQMA
211	Liverpool City Council	Liverpool City AQMA
214	Wyre Forest District Council	Welch Gate AQMA

218	Rotherham Metropolitan Borough Council	Rotherham AQMA 1 - Part 3 (NO2)
220	Winchester City Council	Winchester Town Centre AQMA
221	King's Lynn and West Norfolk Borough Council	Railway Road AQMA
222	Luton Borough Council	Luton AQMA No.1
223	Hastings Borough Council	Hastings Borough Council AQMA No.1
224	Stoke-on-Trent City Council	Fenton (Burnham Street) AQMA
225	Wakefield Metropolitan District Council	M1 AQMA
226	Wakefield Metropolitan District Council	A1 AQMA
227	Redbridge, London Borough of	Redbridge AQMA
228	Reigate and Banstead Borough Council	AQMA No.3 (Horley)
229	Cardiff County Council	St Mary Street AQMA
230	Lancaster City Council	City of Lancaster AQMA
231	Broxbourne Borough Council	Broxbourne AQMA No. 2
232	Broxbourne Borough Council	Broxbourne AQMA No. 3
238	Newcastle City Council	AQMA No.1b (City Centre)
239	Belfast City Council	Belfast AQMA No.1
240	Belfast City Council	Belfast AQMA No.2
241	Belfast City Council	Belfast AQMA No.3
242	Belfast City Council	Belfast AQMA No.4
243	Strabane District Council	Strabane AQMA
244	Strabane District Council	Newtonstewart AQMA
245	Strabane District Council	Castlederg AQMA
246	Mid Devon District Council	Crediton AQMA
247	South Bucks District Council	South Bucks AQMA
248	Dover District Council	A20 AQMA
251	Scarborough Borough Council	Scarborough AQMA
254	Brighton and Hove Council	Brighton AQMA
255	Ballymena Borough Council	Ballykeel AQMA
256	Ballymena Borough Council	Dunclag AQMA
257	Rotherham Metropolitan Borough Council	Fitzwilliam Road (NO2) AQMA
258	Rotherham Metropolitan Borough Council	Wellgate (NO2) AQMA
259	Rotherham Metropolitan Borough Council	Wortley Road (NO2) AQMA
262	St Albans District Council	St Albans AQMA No. 1
264	Wolverhampton City Council	Wolverhampton Air Quality Management Area 2005
265	Eastleigh Borough Council	Eastleigh AQMA No.1 (A335)
266	Central Bedfordshire Council	South Bedfordshire AQMA
267	Rugby Borough Council	Rugby AQMA (NO2)
268	Brentwood Borough Council	Brentwood AQMA No.1
269	Brentwood Borough Council	Brentwood AQMA No.2
270	Brentwood Borough Council	Brentwood AQMA No.3
271	Brentwood Borough Council	Brentwood AQMA No.4
272	Brentwood Borough Council	Brentwood AQMA No.5
273	Brentwood Borough Council	Brentwood AQMA No.6

274	Brentwood Borough Council	Brentwood AQMA No.7
275	Boston Borough Council	Bargate Bridge AQMA
276	Windsor & Maidenhead, Royal Borough of	Maidenhead AQMA
277	Windsor & Maidenhead, Royal Borough of	Windsor AQMA
278	Shropshire Council	Bridgnorth AQMA
279	West Oxfordshire District Council	Chipping Norton AQMA
280	West Oxfordshire District Council	Witney AQMA
281	Cheshire East Council	Congleton AQMA No.1 (Cranage)
282	Cheshire East Council	Congleton AQMA No.2 (West Road, Congleton)
284	Cheshire East Council	Congleton AQMA No.4 (The A34 and A54)
285	Wiltshire Council	Wilton Road AQMA
290	Exeter City Council	Exeter AQMA Order 2010
291	Cheshire West and Chester Council	Whitby Rd/Station Rd AQMA
292	Tonbridge and Malling Borough Council	Tonbridge and Malling - Ditton AQMA
293	Tonbridge and Malling Borough Council	Tonbridge and Malling - Tonbridge High Street AQMA
294	Tonbridge and Malling Borough Council	Tonbridge and Malling - Wateringbury AQMA
297	Newport City Council	Malpas Road AQMA
298	Newport City Council	Caerleon Road AQMA
299	Newport City Council	Royal Oak Hill AQMA
300	Newport City Council	Caerleon High Street AQMA
301	St Albans District Council	St Albans AQMA No. 2
303	Gravesham Borough Council	Gravesham A227 Wrotham Road/ B261 Old Road West AQMA
304	Gravesham Borough Council	Gravesham A226 One-way system AQMA
305	Gravesham Borough Council	Gravesham B262/B261 Pelham Arms Junction AQMA
306	Northumberland Council	Blyth Valley AQMA
307	Hertsmere Borough Council	Hertsmere AQMA No. 5
308	Hertsmere Borough Council	Hertsmere AQMA No. 6
309	New Forest District Council	Lyndhurst AQMA
310	New Forest District Council	Totton AQMA
311	Cambridge City Council	Cambridge AQMA
312	Torbay Borough Council	Hele Road AQMA
313	Luton Borough Council	Luton AQMA No.2
314	Barnsley Metropolitan Borough Council	Barnsley AQMA No.2A
315	Barnsley Metropolitan Borough Council	Barnsley AQMA No.2B
317	Maidstone Borough Council	Maidstone Town AQMA
318	Warwick District Council	Leamington Spa AQMA
319	Warwick District Council	Warwick AQMA (Amended 2008)
324	Barnsley Metropolitan Borough Council	Barnsley AQMA No.3
325	Kingston-upon-Hull City Council	Hull AQMA No.1(A)

326	Gateshead Metropolitan Borough Council	Gateshead AQMA No.1 (Town Centre)
327	Elmbridge Borough Council	Esher AQMA
328	Elmbridge Borough Council	Walton Road, Molesey AQMA
334	Portsmouth City Council	Portsmouth AQMA No.6
335	Portsmouth City Council	Portsmouth AQMA No.7
337	Portsmouth City Council	Portsmouth AQMA No.9
339	Portsmouth City Council	Portsmouth AQMA No.11
340	Portsmouth City Council	Portsmouth AQMA No.12
342	Aylesbury Vale District Council	Tring Road AQMA
343	Slough Borough Council	Slough AQMA No.1
344	Slough Borough Council	Slough AQMA No.2:
345	Waverley Borough Council	Waverley AQMA No.1 - Farnham
346	Waverley Borough Council	Waverley AQMA No.2 - Godalming
347	Waverley Borough Council	Waverley AQMA No.3 - Hindhead
348	Blackpool Borough Council	Blackpool AQMA
349	St Albans District Council	St Albans AQMA No. 7
350	Reigate and Banstead Borough Council	AQMA No.4
351	Reigate and Banstead Borough Council	AQMA No.5
353	Plymouth City Council	AQMA No.1
354	Plymouth City Council	AQMA No.2
356	South Hams District Council	A38 AQMA
357	Northampton Borough Council	Northampton AQMA No. 2
358	Northampton Borough Council	Northampton AQMA No.3
360	Ballymoney Borough Council	Ballymoney AQMA
362	Derry City Council	Derry AQMA
363	South Ribble Borough Council	AQMA No.1
364	South Ribble Borough Council	AQMA No.2
365	South Ribble Borough Council	AQMA No.3
366	South Ribble Borough Council	AQMA No.4
368	Southampton Council	AQMA No.1 (Bevois Valley)
369	Southampton Council	AQMA No.2 (Bitterne Road West)
370	Southampton Council	AQMA No.3 (Winchester Road)
371	Southampton Council	AQMA No.4 (Town Quay)
372	Southampton Council	AQMA No.5 (Redbridge Road)
373	Southampton Council	AQMA No.6 (Romsey Road)
374	Bolsover District Council	Barlborough AQMA No.1
375	Rushcliffe Borough Council	AQMA No.1
376	Rushcliffe Borough Council	AQMA No.2
378	Gloucester City Council	Barton Street AQMA
379	Gloucester City Council	Priory Road AQMA
381	Preston Borough Council	AQMA No. 1
382	Preston Borough Council	AQMA No.2
383	North Lincolnshire Council	Scunthorpe AQMA
384	Calderdale Metropolitan Borough Council	Calderdale AQMA No.1
385	East Dunbartonshire Council	Kirkintilloch Road AQMA
386	South Northamptonshire Council	Towcester AQMA

387	Blackburn with Darwen Borough Council	AQMA 1 - Intack
388	Blackburn with Darwen Borough Council	AQMA 2 - Bastwell
389	Blackburn with Darwen Borough Council	AQMA 3 - A666 between Robert Street and Wraith Street
390	Blackburn with Darwen Borough Council	AQMA 4 - Witton
391	Blackburn with Darwen Borough Council	AQMA 5 - Earcroft
394	Newcastle City Council	AQMA No.5 (Gosforth)
395	Teignbridge District Council	Teignmouth AQMA
396	Teignbridge District Council	Newton Abbot AQMA
397	Teignbridge District Council	Dawlish AQMA
398	Teignbridge District Council	Kingskerswell AQMA
399	Tunbridge Wells Borough Council	A26 AQMA
400	Huntingdonshire District Council	Huntingdon AQMA
401	Huntingdonshire District Council	St Neots AQMA
402	Adur District Council	Shoreham AQMA
403	Adur District Council	Southwick AQMA
404	Lewes District Council	Lewes Town Centre AQMA
405	Carlisle City Council	A7 AQMA
406	New Forest District Council	Fawley AQMA
407	Chelmsford Borough Council	Chelmsford AQMA
408	Charnwood Borough Council	Great Central Railway AQMA
409	Broxtowe Borough Council	Broxtowe AQMA No.1
410	Broxtowe Borough Council	Broxtowe AQMA No.2
411	Broxtowe Borough Council	Broxtowe AQMA No.3
412	Broxtowe Borough Council	Broxtowe AQMA No.4
413	Cornwall Council	Kerrier AQMA
414	North Lanarkshire Council	Coatbridge AQMA
415	North Lanarkshire Council	Chapelhall AQMA
416	North Lanarkshire Council	Motherwell AQMA
417	Renfrewshire Council	Paisley AQMA (amended)
418	Falkirk Council	Grangemouth AQMA
419	Warrington Borough Council	Warrington AQMA No.2
420	Watford Borough Council	AQMA No.1 (St Albans Rd)
421	Watford Borough Council	AQMA No.2 (Vicarage Rd)
422	Watford Borough Council	AQMA No.3 (Aldenham Road)
423	Watford Borough Council	AQMA No.4 (Chalk Hill)
424	Watford Borough Council	AQMA No.5 (A405/Horseshoe Lane)
425	Watford Borough Council	AQMA No.6 (M1/Meriden)
431	South Staffordshire District Council	AQMA No.1 (Woodbank)
432	South Staffordshire District Council	AQMA No.2 (Bursnips)
434	South Staffordshire District Council	AQMA No.4 (Wedges Mills)
435	Monmouthshire Council	Usk AQMA
436	Limavady Borough Council	Dungiven AQMA
437	Herefordshire Council	Bargates (Leominster) AQMA
438	Fareham Borough Council	Fareham AQMA



439	Bournemouth Borough Council	Bournemouth AQMA No.1
440	South Oxfordshire District Council	Wallingford AQMA
441	Ipswich Borough Council	Ipswich AQMA No.1
442	Ipswich Borough Council	Ipswich AQMA No.2
443	Ipswich Borough Council	Ipswich AQMA No.3
444	Canterbury City Council	Canterbury AQMA No.1
445	Thanet District Council	Birchington AQMA
446	Wakefield Metropolitan District Council	M62 AQMA
447	Wakefield Metropolitan District Council	Wakefield City AQMA
448	Reigate and Banstead Borough Council	AQMA No.6
449	Reigate and Banstead Borough Council	AQMA No.9
450	Blaby District Council	AQMA 4A
451	Blaby District Council	AQMA 4B
452	Blaby District Council	AQMA 5
453	Eastleigh Borough Council	Eastleigh AQMA No.2 (M3)
454	Eastleigh Borough Council	Eastleigh AQMA No.3
455	Calderdale Metropolitan Borough Council	Calderdale AQMA No.2
456	Fenland District Council	Wisbech AQMA No.3 (NO2)
457	Huntingdonshire District Council	Brampton AQMA
458	Huntingdonshire District Council	Hemingford to Fenstanton (A14) AQMA
459	Sevenoaks District Council	AQMA No. 8 (Swanley Town Centre)
460	Sevenoaks District Council	AQMA No.9 (Seal High Street)
461	Sevenoaks District Council	AQMA No.10 (Sevenoaks High Street)
462	Sevenoaks District Council	AQMA No.11 (Westerham Town Centre)
463	Sevenoaks District Council	AQMA No.12 (Sevenoaks Bat & Ball)
464	Havering, London Borough of	Havering AQMA
465	Fenland District Council	Whittlesey AQMA No.1 (SO2)
466	Suffolk Coastal District Council	Woodbridge AQMA
467	Reading Borough Council	Reading AQMA
473	Dartford Borough Council	Dartford AQMA No.2
474	Dartford Borough Council	Dartford AQMA No.3
475	Dartford Borough Council	Dartford AQMA No.4
476	Dundee City Council	Dundee AQMA
477	Derby City Council	Derby NO2 AQMA No.2: A52
478	Calderdale Metropolitan Borough Council	Calderdale AQMA No.3 (Hebden Bridge)
479	North East Lincolnshire Council	Immingham AQMA
480	Colchester Borough Council	Colchester AQMA No.2
481	Edinburgh City Council	Edinburgh AQMA No.2 (St John's Road)
482	South Tyneside Metropolitan Borough Council	AQMA No.1
483	South Tyneside Metropolitan Borough Council	AQMA No.2
484	Bradford City Council	AQMA No.1
485	Bradford City Council	AQMA No.2

486	Bradford City Council	AQMA No.3
487	Bradford City Council	AQMA No.4
489	Reigate and Banstead Borough Council	AQMA No.8
490	Cheshire East Council	Nantwich AQMA
491	Mid Devon District Council	Cullompton AQMA
492	Sevenoaks District Council	AQMA No.6 (M25-PM10)
493	Bromley Council, London Borough of	Bromley AQMA
494	Carlisle City Council	AQMA No.2
495	West Dorset District Council	Chideock AQMA
496	Perth & Kinross Council	Perth AQMA
497	Uttlesford District Council	Uttlesford AQMA No.1
498	Uttlesford District Council	Uttlesford AQMA No.2
499	Uttlesford District Council	Uttlesford AQMA No.3
500	Peterborough Council	AQMA No.1
501	East Staffordshire Borough Council	Burton-Upon-Trent AQMA No.1
502	East Staffordshire Borough Council	Burton-Upon-Trent AQMA No.2
503	South Cambridgeshire District Council	A14 Corridor AQMA
504	Chichester District Council	Chichester (St Pancras) AQMA
505	Chichester District Council	Chichester (Orchard St) AQMA
506	Chichester District Council	Chichester (Stockbridge Roundabout) AQMA
507	Wychavon District Council	Port Street (Evesham) AQMA
508	Epsom & Ewell Borough Council	Ewell AQMA
509	Doncaster Metropolitan Borough Council	AQMA No.4
510	Calderdale Metropolitan Borough Council	Calderdale AQMA No.4 (Luddendenfoot)
511	Calderdale Metropolitan Borough Council	Calderdale AQMA No.5 (Stump Cross)
512	Calderdale Metropolitan Borough Council	Calderdale AQMA No.6 (Brighouse)
513	Chiltern District Council	Chesham AQMA
514	Bolsover District Council	Barlborough AQMA No.2
515	Nuneaton and Bedworth Borough Council	Leicester Road Gyratory AQMA
516	East Hertfordshire District Council	Bishops Stortford AQMA
517	Vale of White Horse District Council	Abingdon AQMA
519	Glasgow City Council	Parkhead Cross AQMA
520	Glasgow City Council	Byres Rd/Dumbarton Rd AQMA
521	Dover District Council	High Street/Ladywell AQMA
522	Wiltshire Council	London Road AQMA
523	Fareham Borough Council	Portland Street AQMA
524	Dudley Metropolitan Borough Council	Dudley AQMA
525	Monmouthshire Council	Chepstow AQMA
527	Torbay Borough Council	Brixham AQMA
528	Rhondda-Cynon-Taff Council	Tonteg-Church Village-Llantwit Fardre (A473) AQMA
529	Rhondda-Cynon-Taff Council	Aberdare Town Centre AQMA
530	Rhondda-Cynon-Taff Council	Broadway AQMA

531	Rhondda-Cynon-Taff Council	Cilfynydd AQMA
532	Rhondda-Cynon-Taff Council	Mwyndy AQMA
533	Rhondda-Cynon-Taff Council	Nantgarw AQMA
534	Rhondda-Cynon-Taff Council	Pontypridd Town Centre AQMA
535	Rhondda-Cynon-Taff Council	Tylorstown AQMA
536	Newtownabbey Borough Council	AQMA No.2 (Ballyclare)
537	Newtownabbey Borough Council	AQMA No.3 (Elmfield)
538	Lancaster City Council	Carnforth AQMA
539	Burnley Borough Council	Duke Bar AQMA
540	Dungannon District Council	Church Street AQMA
541	Powys County Council	New Road (Newtown) AQMA
542	Cannock Chase District Council	Cannock Chase AQMA
543	Lincoln City Council	Lincoln PM10 AQMA
544	Northampton Borough Council	Northampton AQMA No.4
545	Midlothian Council	Pathhead AQMA
546	Newtownabbey Borough Council	AQMA No.4 (Sandyknowes)
547	Cheshire East Council	Congleton AQMA No.5 (Lower Heath)
548	Cheshire East Council	Congleton AQMA No.6 (Sandbach)
549	Walsall Metropolitan Borough Council	Chuckery AQMA (PM10)
550	Cheshire East Council	Chester Road AQMA
551	Vale of White Horse District Council	Botley AQMA
552	Aylesbury Vale District Council	Friarage Road AQMA
553	Aylesbury Vale District Council	Stoke Road AQMA
554	Southampton Council	AQMA No.7 (Millbrook Road West)
555	Southampton Council	AQMA No.8 (Commercial Road)
556	Gateshead Metropolitan Borough Council	Gateshead AQMA No.2 (Birtley)
557	Barnsley Metropolitan Borough Council	Barnsley AQMA No.4
558	Barnsley Metropolitan Borough Council	Barnsley AQMA No.5
559	Cotswold District Council	Birdlip AQMA
560	Wakefield Metropolitan District Council	Castleford AQMA
561	Wakefield Metropolitan District Council	Featherstone AQMA
562	Wakefield Metropolitan District Council	Pontefract AQMA
563	Wakefield Metropolitan District Council	Knottingley AQMA
564	Carlisle City Council	AQMA No.3
565	Carlisle City Council	AQMA No.4
566	Carlisle City Council	AQMA No.5
567	Carlisle City Council	AQMA No.6
568	Lichfield City Council	A5 Muckley Corner AQMA (no.1)
569	Caerphilly County Borough Council	Caerphilly Town Centre AQMA
571	Tonbridge and Malling Borough Council	Tonbridge and Malling - Aylesford AQMA
572	Tonbridge and Malling Borough Council	Tonbridge and Malling - Larkfield AQMA
573	Warwick District Council	Warwick Road (Kenilworth) AQMA
574	Warwick District Council	New Street (Kenilworth) AQMA
575	Kirklees Metropolitan Council	Kirklees AQMA
576	Cheshire East Council	Nantwich Road AQMA (Crewe)

577	Fife Council	Bonnygate AQMA
578	South Lanarkshire Council	Whirlies Roundabout AQMA
579	Reigate and Banstead Borough Council	AQMA No.10
580	Armagh City Council	Armagh AQMA
581	Milton Keynes Borough Council	Olney AQMA
582	Forest Heath District Council	Newmarket AQMA
583	South Oxfordshire District Council	Watlington AQMA
584	Swale Borough Council	Newington AQMA
585	Cornwall Council	Bodmin AQMA
587	Tewkesbury Borough Council	Tewkesbury Town Centre AQMA
588	West Berkshire Council	Newbury AQMA
589	St Helens Metropolitan Borough Council	M6 AQMA (No.1)
590	St Helens Metropolitan Borough Council	Newton High Street AQMA (No.2)
591	Suffolk Coastal District Council	Dooley Inn AQMA
592	Northampton Borough Council	Northampton AQMA No.5
593	Northampton Borough Council	Northampton AQMA No.6
594	Northampton Borough Council	Northampton AQMA No.7
595	Northampton Borough Council	Northampton AQMA No.8
596	Northampton Borough Council	Northampton AQMA No.9
597	Northampton Borough Council	Northampton AQMA No.10
598	Northampton Borough Council	Northampton AQMA No.11
599	Worcester City Council	Bridge Street/Dolday AQMA
600	Worcester City Council	Lowesmoor/Rainbow Hill AQMA
601	Worcester City Council	Newtown Road AQMA
602	Sefton Metropolitan Borough Council	AQMA 1
603	Sefton Metropolitan Borough Council	AQMA 2
604	Sefton Metropolitan Borough Council	AQMA 3
605	Stratford on Avon District Council	Studley AQMA
606	Wyre Forest District Council	Kidderminster (Ring Road) AQMA
607	South Hams District Council	Ivybridge AQMA
608	South Hams District Council	Totnes AQMA
609	North West Leicestershire District Council	Castle Donnington AQMA
610	North West Leicestershire District Council	Coalville AQMA
611	North Lanarkshire Council	Harthill AQMA
612	Wyre Borough Council	Chapel Street AQMA
613	Windsor & Maidenhead, Royal Borough of	Bray/M4 AQMA
614	North West Leicestershire District Council	Copt Oak AQMA
617	North Lincolnshire Council	Low Santon AQMA
618	Bedford Borough Council	Bedford Town Centre AQMA
619	Rhondda-Cynon-Taff Council	Ferndale AQMA
620	Rhondda-Cynon-Taff Council	Mountain Ash Town Centre AQMA
621	Rhondda-Cynon-Taff Council	Llwynypia AQMA
622	Rhondda-Cynon-Taff Council	Nightingales Bush AQMA

623	Rhondda-Cynon-Taff Council	Cymmer AQMA
624	Lancaster City Council	Galgate AQMA
625	Coventry City Council	Coventry City-Wide AQMA
626	Ryedale District Council	Malton AQMA
627	Gloucester City Council	Painswick Road AQMA
628	West Lancashire District Council	Ormskirk AQMA
629	Derbyshire Dales District Council	Cubeley AQMA
630	Falkirk Council	Banknock & Higgs AQMA
631	Falkirk Council	Falkirk AQMA (Annual Mean)
632	Falkirk Council	Falkirk AQMA (Hourly Mean)
633	Gravesham Borough Council	Gravesham Parrock Street AQMA
634	Gravesham Borough Council	Gravesham Echo Junction AQMA
635	Babergh District Council	Sudbury AQMA
636	Elmbridge Borough Council	Weybridge AQMA
637	Elmbridge Borough Council	Hampton Court AQMA
638	Elmbridge Borough Council	Cobham AQMA
639	Elmbridge Borough Council	Hinchley Wood AQMA
640	Elmbridge Borough Council	Walton AQMA
641	Cheshire East Council	Disley AQMA
642	Cheshire East Council	Knutsford AQMA
643	Cheshire East Council	Macclesfield AQMA
644	York City Council	York AQMA No.2
645	Bromsgrove District Council	Stoke Heath AQMA
646	Bromsgrove District Council	Hagley AQMA
647	Ballymena Borough Council	Linenhall Street (Ballymena AQMA No.3)
648	Rotherham Metropolitan Borough Council	Rotherham AQMA No.1 (Part 4)
649	Worthing Borough Council	Worthing AQMA
650	Bath & North East Somerset Council	Keynsham AQMA
651	East Hampshire District Council	Bordon AQMA
652	Rochford District Council	Rochford AQMA
653	North East Lincolnshire Council	Grimsby AQMA
654	Forest of Dean District Council	Lydney AQMA
655	South Gloucestershire District Council	Cribbs Causeway AQMA
656	South Gloucestershire District Council	Kingswood AQMA
657	South Gloucestershire District Council	Staple Hill AQMA
659	Medway Council	Central Medway AQMA
660	Medway Council	Rainham AQMA
661	Medway Council	Gillingham AQMA
662	Newry and Mourne District Council	Newry (Urban Centre) AQMA
663	East Hertfordshire District Council	Hertford AQMA
664	Poole Borough Council	Poole AQMA
665	Leeds City Council	Leeds AQMAs
666	Oxford City Council	The City of Oxford
667	Thanet District Council	Thanet AQMA High St, St Lawrence
668	St Edmundsbury Borough Council	St Edmundsbury Borough AQMA 2010/1

669	Stratford on Avon District Council	Stratford upon Avon District Council (No 1) 2010
671	Harrogate Borough Council	Knaresborough AQMA No1
672	Harrogate Borough Council	Ripon AQMA No1
673	South Lakeland District Council	Variation to existing Kendal AQMA
674	Horsham District Council	Horsham AQMA No1
675	Ribble Valley Borough Council	Whalley Road, Clitheroe (No 1)
676	West Lothian Council	Broxburn AQMA
677	Bracknell Forest Borough Council	Area 2: The Bracknell Road (B3348) and Crowthorne High Street, Crowthorne AQMA
678	Bracknell Forest Borough Council	Area 1: The Bagshot Road (A322) Horse and Groom Roundabout Downshire Way AQMA
679	Castlereagh Borough Council	Normandy Court, Dundonald
680	Gedling Borough Council	Gedling no 2 AQMA
681	Ipswich Borough Council	Ipswich AQMA No. 4
684	Aberdeen City Council	Anderson Drive AQMA
685	Aberdeen City Council	Wellington Road AQMA
686	Edinburgh City Council	Great Junction Street AQMA
687	Swale Borough Council	AQMA2 - Ospringe St, Faversham, Kent
688	Durham County Council	Air Quality Management Area (Durham City)(No1)
689	Pendle Borough Council	Air Quality Management Area (Colne)
690	Wiltshire Council	Marlborough Air Quality Management Area
691	East Dunbartonshire Council	East Dunbartonshire Council AQMA
692	Reigate and Banstead Borough Council	AQMA No 11
693	Reigate and Banstead Borough Council	AQMA No 12
844	Cheshire West and Chester Council	AQMA Boughton No2
845	Falkirk Council	Falkirk Council AQMA no 5 Order 2011
846	Cardiff County Council	Stephenson Court AQMA
847	Epping Forest District Council	AQMA (Epping Forest District Council) no 2
849	Newport City Council	Newport City Council Chepstow Road Air Quality Management Order 2011
850	Newport City Council	Newport City Council Malpas Road AQMA 2011
851	North Devon District Council	North Devon Council AQMA no1
852	North Lanarkshire Council	North Lanarkshire AQMA (Moodiesburn) 2011
853	North Lanarkshire Council	North Lanarkshire AQMA (Croy) 2011
854	South Kesteven District Council	Brooke St and Manthorpe Rd AQMA
855	Stoke-on-Trent City Council	Stoke on Trent Air quality Management Order 2011
856	Warrington Borough Council	Warrington Borough Council AQMA Order no 3 2010
857	Rushcliffe Borough Council	Rushcliffe Borough Council AQMA no 1 Order 2011

999*	Greater Manchester	Greater Manchester AQMA
1361	Poole Borough Council	Area No 2 Ashley Road
1362	Cheshire East Council	Earl Street Crewe
1363	East Devon District Council	East Devon AQMA
1364	Fife Council	Appin Crescent Dunfermline
1365	Halton Borough Council	Halton Widnes No 1
1367	Halton Borough Council	Halton AQMA No 2
1368	Horsham District Council	Horsham Cowfold AQMA
1371	West Dorset District Council	Dorchester AQMA
1372	Bromsgrove District Council	AQMA No 4 Worcester Road
1477	West Berkshire Council	West Berkshire Thatcham AQMA
1478	Cheshire East Council	Wistaston Road Crewe AQMA
1479	Carmarthenshire County Council	Carmarthenshire Llandeilo AQMA
1480	Cheltenham Borough Council	Cheltenham Whole Borough AQMA
1481	Derry City Council	Dales Corner AQMA
1482	Derry City Council	Bunrana Rd/Racecourse Rd AQMA
1483	St Helens Metropolitan Borough Council	AQMA No.3 (Borough Rd)
1484	St Helens Metropolitan Borough Council	AQMA No.4 (Reflection Court)
1486	Wiltshire Council	Devizes (Shanes Castle) AQMA
1493	King's Lynn and West Norfolk Borough Council	Gaywood Clock AQMA
1494	Norwich City Council	AQMA No.4 Riverside Road
1495	South Staffordshire District Council	AQMA No 5 Oak Farm

\*The modelling carried out to determine the extent of the AQMAs in the Greater Manchester area was coordinated for all of the local authorities (Bolton, Bury, Manchester, Oldham, Rochdale, Salford, Stockport, Tameside, Trafford and Wigan). This resulted in the creation of one aggregated AQMA polygon (AQMA\_ID 999) encompassing all of the AQMAs in the Greater Manchester area.

## Appendix 2 – Methodology, AQMA metadata and maps

### Overview

Data describing the extent and location of the new and amended AQMAs in the UK in 2011 were received in a variety of formats:

- ESRI shapefiles
- MapInfo TAB and MID/MIF files
- Adobe PDF or graphics files (e.g., JPEGs, TIFs etc).

Data in each format required processing using a different method as described below.

### Shapefiles

All shapefiles were imported into ArcMap for processing. Some shapefiles were provided as polygons: these required no further processing. Some Local Authorities provided shapefiles containing polylines which were converted into polygons in ArcMap.

### MapInfo TAB and MID/MIF files

MapInfo format files were initially converted into ESRI shapefiles using the Universal Translator tool in MapInfo. Following this the shapefiles were imported into ArcMap and processed as described in the shapefile methodology.

### Graphics or image Files

The boundaries of the AQMAs supplied as Adobe PDF or graphics files (e.g., JPEGs, TIFs etc) were digitised in ArcMap using shapefiles that have been prepared internally for the UK AAQA contract. The shapefiles were used as a backdrop for this digitising. These shapefiles consist of UK major roads, B roads, and minor roads across the UK in the correct coordinates.

### Creation of the updated shapefile

Once shapefiles had been supplied or created for all the newly declared and amended AQMAs, metadata (or attributes) were assigned to each shapefile as described in Table A.2. This information was taken from the Bureau Veritas-Transport & Travel Research Ltd. AQMA archive database. Where supplementary information was required, this was obtained directly from the declaring Local Authority.

The processed shapefiles for each AQMA were assigned unique IDs (AQMA\_ID). These AQMA\_IDs are consistent with the AQMA\_IDs used in the database of AQMAs held on the Air Quality Archive (<http://aqma.defra.gov.uk/maps.php>). The AQMA\_IDs are listed in Appendix 2.

Revoked or amended AQMAs were removed from a copy of the previous year's AQMA dataset.

All the AQMAs were then merged together with the updated previous year AQMA dataset to form the updated UK AQMA dataset.

### AQMA metadata and maps

The most recent dataset is available from Defra's GIS unit by contacting Carol Hrynkiewicz ([Carol.Hrynkiewicz@defra.gsi.gov.uk](mailto:Carol.Hrynkiewicz@defra.gsi.gov.uk)). The GIS datasets can be opened and viewed using specialised GIS software. The dataset is also available in Published Map document Format (PMF). The PMF form of the GIS dataset can also be opened and viewed in ArcReader



(<http://www.esri.com/software/arcgis/arcreader/index.html>), a free, easy-to-use desktop mapping application that allows users to view, explore, and print maps.

The AQMA GIS dataset is composed of several file types and includes a Microsoft Database table (dBASE or .dbf file). The Database table can be opened and read in Microsoft Excel. The Database table contains complete attribute information for each UK AQMA. A list of attributes contained within the GIS database and the associated Database table are shown in Table A.2.

**Table A.2 Descriptions of the field names used in the AQMA GIS dataset.**

Field name	Description
LA_ID	Unique ID for each local authority
AQMA_ID	Unique ID for each AQMA
LOCAL_AUTH	Local Authority name
TITLE	AQMA name
DESCRIPTIO	Written description of the extent of the AQMA boundary
PROCESSING	Initial format of the AQMA data obtained from the Local Authority and indication of the processing method utilised
NEW_REWISE	1 to indicate that this AQMA is new or revised for the current dataset
NO2	1 to indicate that the AQMA was declared for NO <sub>2</sub>
PM10	1 to indicate that the AQMA was declared for PM <sub>10</sub>
SO2	1 to indicate that the AQMA was declared for SO <sub>2</sub>
BENZENE	1 to indicate that the AQMA was declared for Benzene
AREA_M2	The area of each AQMA (m <sup>2</sup> )
AREA_KM2	The area of each AQMA (km <sup>2</sup> )



The Gemini Building  
Fermi Avenue  
Harwell  
Didcot  
Oxfordshire  
OX11 0QR

Tel: 0870 190 1900  
Fax: 0870 190 6318

[www.aeat.co.uk](http://www.aeat.co.uk)